

NEW

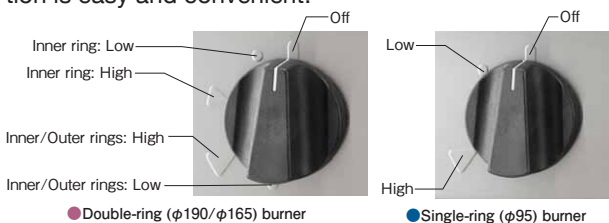
Top grade range with high-power burner and large full-surface trivet that meets high demands of those "chefs" who work in hotels and restaurants!

Series line-up / Gas range, gas table, gas table stove, soup range

First-class ones suitable for the prestige of orthodox kitchen... that is the New Power Cook Series [equipped with New Universal Burner]. This series is made of stainless steel which is durable and beautiful equipped with high-power burner of 16.9kW (14,500kcal/h). Moreover, we adopted large full-surface trivet, strong and easy to use, which meets chefs' hard work. The product line-up includes ranges, tables, table stoves, soup ranges, as well as various tops, totaling 13 types, 92 models, which enables free layout plan to meet the needs of each kitchen.

Simply operated top burner gas cock.

It is simple enough to adjust the fire power of the inner and outer rings of top burner with only one gas cock. Also with the fire power positions marked, the operation is easy and convenient.



Durable and strong large full-surface trivet.

Large trivet is adopted for a hard use. The shape and design is thick and good in durability to hold pans and pots stably and make it easy to move heavy pots.



3 types (R5, R20 and full R) for front rail.

You can choose the round shape for front rail from 3 types to easily match with adjacent equipment. Standard spec is R5, however you can choose R20 or full R upon your request. (The price is the same.)



Modification of front rail to R20 or Full R may be applied to gas ranges, tables, table stoves and soup ranges. Delivery date will be about 1 week after the order received.

Newly designed natural convection oven **NEW**

The design inside the oven is renewed to have wider space which can contain large size of pans easily. It realizes to heat food evenly more than ever because the hot air flows evenly in the oven. The inside temperature is set freely from 100 to 350°C, which enables standardization of cooking process.



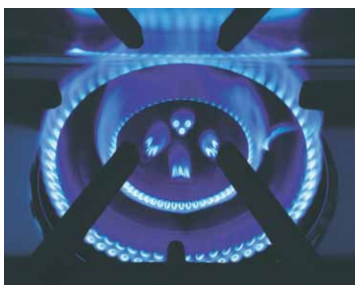
Inside the oven is made of stainless steel and it is durable.

Conventional strong flame power maintained. **NEW** Safety improved!

There are 3 types of new high-power burners: 16.9kW (14,500kcal/h), 13.4kW (11,500kcal/h), and 5.23kW (4,500kcal/h). The conventional strong flame power is maintained. Besides, safety has been further improved by well-balanced flame and stable combustion. In addition the daily maintenance is easy because the flame port has a shape which prevents from clogging even if it is boiled over. The pilot burner is placed under the top drip tray and it is protected by a protective cover. So, it prevents clogging.

Placement of burners just in places needed in the layout.

Effective placement of burners of 3 types to suit the size of main body. You can choose burners according to your use, fire-power or layout.



● Double ring burner Inner/outer rings: High



● Double ring burner Inner/outer rings: Low



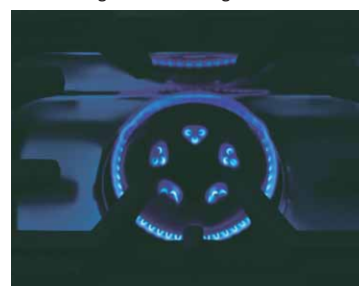
● Double ring burner Inner ring: High



● Double ring burner Inner ring: Low



● Single ring burner High



● Single ring burner Low

Burner Line-up

Double ring burner	φ190 burner	16.9kW (14,500kcal/h)
	φ165 burner	13.4kW (11,500kcal/h)
Single ring burner	φ95 burner	5.23kW (4,500kcal/h)

Piezoelectrically auto-ignited top burner.

Oven with safety shut-off device.

We also have ranges equipped with convection oven to respond quick serving and large volume cooking by hot air circulation. (See p.5) RGR-1565XD



Variation of tops to widen the variety of menu

Heat top range



This is the most suitable for cooking to heat indirectly for a long time, such as stewing stew, roux or sauce or warming soup. The center part of the plate can be heated quickly by a high-power burner.

- The dye cast top plate, which is excellent in storing heat and retaining warmth, makes the heat at the temperature ranging from 70 to 450°C extend in a radial direction and is used in different ways according to what you cook.
- Removing the top ring, an open fire cooking is possible.
- Equipped with piezoelectric auto-ignition and safety shut-off device.

Fry top range



The 24mm thick steel plate is heated evenly by infrared burner. Excellent in thermal distribution, steaks and hamburgers are grilled just right.

- Temperature of the top plate can be set freely at ranging from 100 to 350°C, enabling standardization of cooking process.
- Equipped with oil receiver to facilitate maintenance.
- Equipped with piezoelectric auto-ignition and safety shut-off device.

Charbroiler



Lava stones are heated by high-power burner. The red-hot lava stones serve as charcoal grilling and create authentic taste. This is also suitable for grilling seafood as well as steaks.

- Inclined grid bars prevent meat juice and fat from dripping.
 - Equipped with piezoelectric auto-ignition and safety shut-off device.
- ※ The spec of lava stones is available only for 097.

Grooved griddle



The 24mm thick steel plate has grooves on its surface and makes tasty-looking browned color on the ingredients. It is an infrared burner excellent in thermal distribution, therefore steaks and hamburgers can be grilled at its best condition.

- Equipped with piezoelectric auto-ignition and safety shut-off device.



RGG-067T

Fryer fast food type

The microcomputer manages the oil temperature accurately at from 100 to 240°C and keeps at a proper temperature. It serves for standardization of cooking process.

- Digital display is easy to read and enables single operation.
- Our original hole heat pipe improves thermal efficiency.
- The flow of gas is controlled at the best condition by proportional controlling. This prevents overheat and oxidization of oil.



Tabletop fryer



RGF-047T

While adopting middle heating system, the height is designed as low as 250mm. It just fits in the space on a drawer cold table.

- Piezoelectric auto-ignition.

Salamander

The infrared burner makes an even and beautiful browned color on gratins and pizzas.

- It is attachable to an upper place such as walls and helps to utilize the space effectively.
- It realizes subtle fire-power control by a vertically movable shelf.
- Equipped with Piezoelectric auto-ignition/ safety shut-off device.



Charbroiler

*Model of this picture is produced by order. Refer to P14 for detail.

Heat top range

Fry top range



Fryer

Gas Range

Option

Chinese trivet for New Power Cook series



RA (for ϕ 165 burner) List price ¥4,200 (Tax-excluded)
RB (for ϕ 190 burner) List price ¥5,500 (Tax-excluded)



Products with this mark, has passed the type inspection of the Japan Gas Appliances Inspection Association. (LP gas, 13A)

New Power Cook gas ranges /gas tables conform to the specification described in the "Public Building Construction Standard Specifications (machinery installation work)" supervised by the Minister of Land, Infrastructure and Transport's Secretariat.

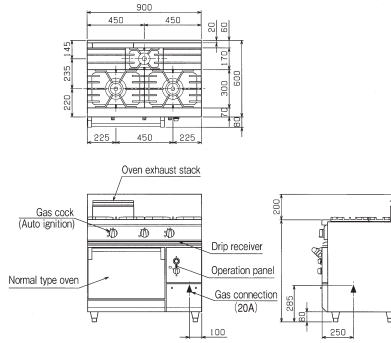
RGR-0963D

List Price : ¥288,000 (tax-excluded)

φ165 burner×2
φ95 burner×1

Oven
Normal type

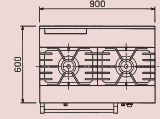
Model Change



RGR-0962D

List Price : ¥269,000 (tax-excluded)

φ165 burner×2



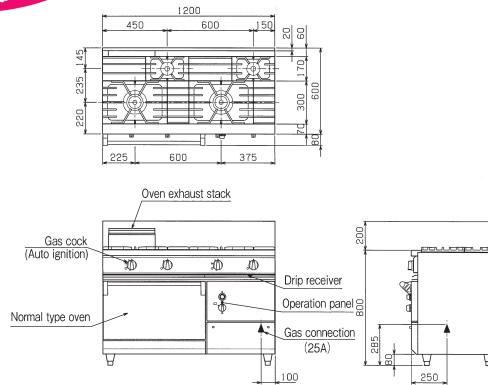
RGR-1264D

List Price : ¥320,000 (tax-excluded)

φ165 burner×2
φ95 burner×2

Oven
Normal type

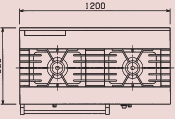
Model Change



RGR-1262D☆

List Price : ¥314,000 (tax-excluded)

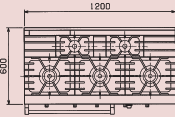
φ165 burner×2



RGR-1265D

List Price : ¥398,000 (tax-excluded)

φ165 burner×3 φ95 burner×2



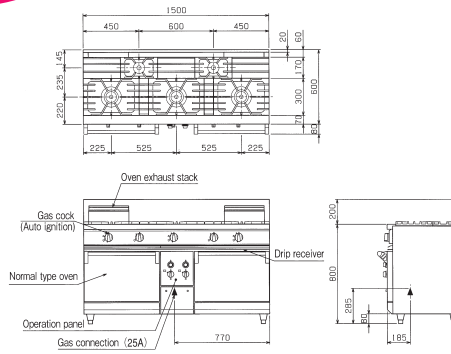
RGR-1565D

List Price : ¥515,000 (tax-excluded)

φ165 burner×3
φ95 burner×2

Oven
Normal type Normal type

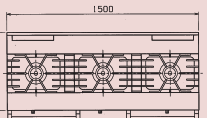
Model Change



RGR-1563D☆

List Price : ¥508,000 (tax-excluded)

φ165 burner×3



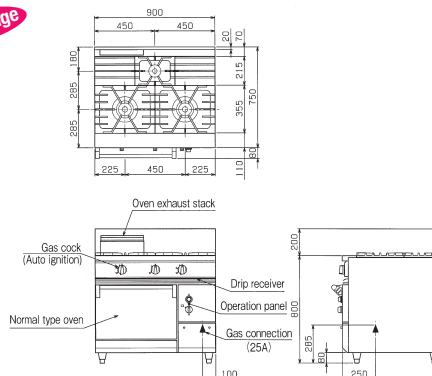
RGR-0973D

List Price : ¥350,000 (tax-excluded)

φ190 burner×2
φ95 burner×1

Oven
Normal type

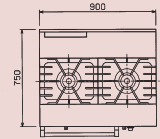
Model Change



RGR-0972D☆

List Price : ¥340,000 (tax-excluded)

φ190 burner×2



Depth 600 mm

Depth 750 mm

●NEW Power Cook Gas Range series also has "No back guard" type. Please specify when placing order. (The price is the same.)

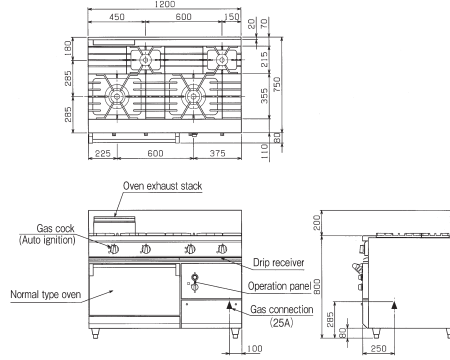
■Delivery date for the models with ☆mark is about 2 weeks after receipt of order.

RGR-1274D
List Price : ¥389,000
(tax-excluded)

φ190 burner×2
φ95 burner×2

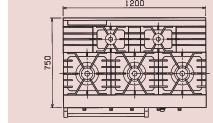
Oven
Normal type

Model Change



RGR-1275D
List Price : ¥418,000
(tax-excluded)

φ190 burner×3 φ95 burner×2

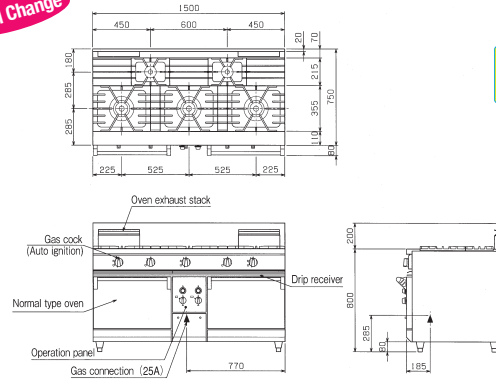


RGR-1575D
List Price : ¥580,000
(tax-excluded)

φ190 burner×3
φ95 burner×2

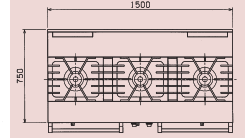
Oven
Normal type Normal type

Model Change



RGR-1573D ☆
List Price : ¥570,000
(tax-excluded)

φ190 burner×3



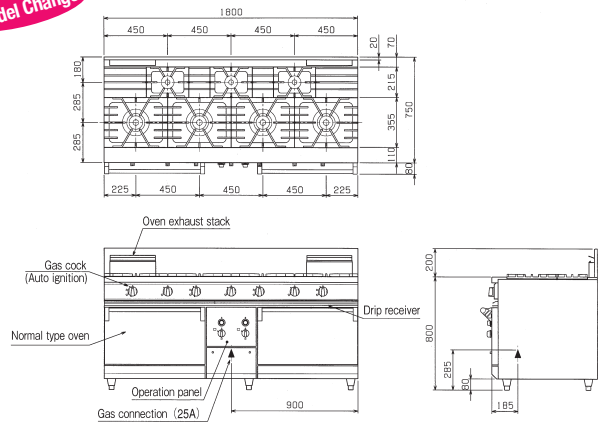
Depth
750
mm

RGR-187D
List Price : ¥748,000
(tax-excluded)

φ190 burner×4
φ95 burner×3

Oven
Normal type Normal type

Model Change



RGR-1812D ☆
List Price : ¥1,280,000
(tax-excluded)

φ190 burner×8

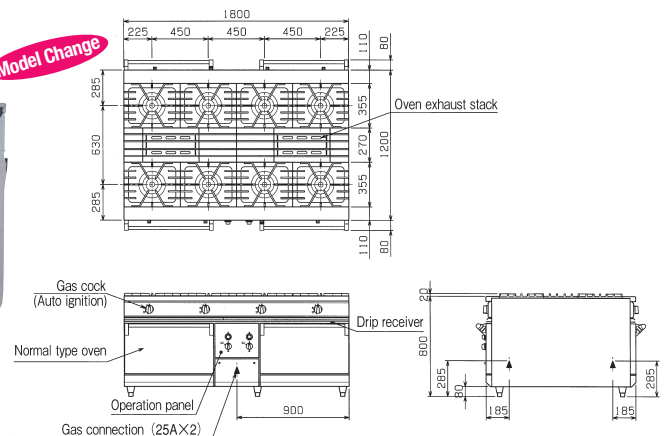
Oven
Normal type Normal type

Double-sided

Depth
1200
mm



Model Change



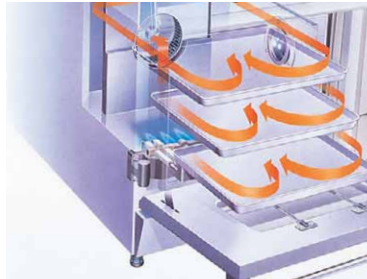
A combination of gas range & convection oven improves work efficiency drastically!

■ Hot air circulation system enables quick serving and large volume cooking.

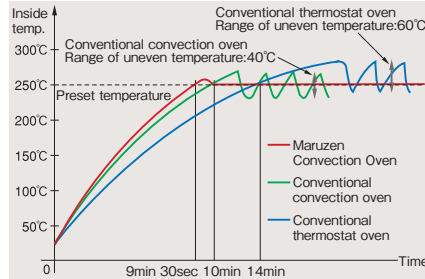
By circulating hot air rapidly inside the oven, the inside temperature quickly rises up to the preset temperature and raises the surface temperature of ingredients instantly, shortening cooking time drastically.

■ Useful cooling function to cool down the temperature inside the oven.

● Hot air circulation system



● Oven performance curve



● Control panel



● Inside of oven fully made of stainless steel and durable.



NEW

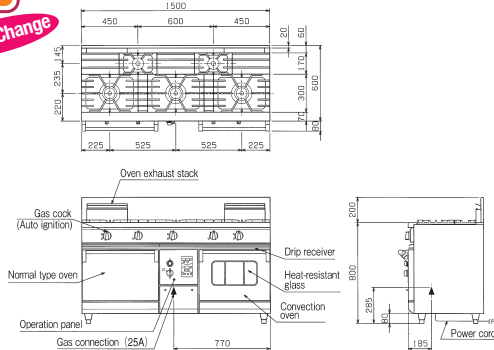
RGR-1565XD
List Price : ¥748,000 (tax-excluded)

φ165 burner×3
φ95 burner×2

Oven
Normal type Convection

Model Change

Depth 600 mm



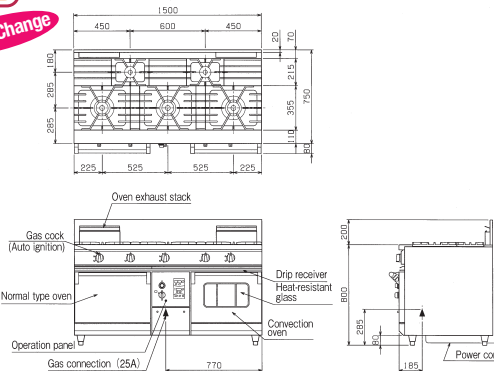
RGR-1575XD
List Price : ¥798,000 (tax-excluded)

φ190 burner×3
φ95 burner×2

Oven
Normal type Convection

Model Change

Depth 750 mm



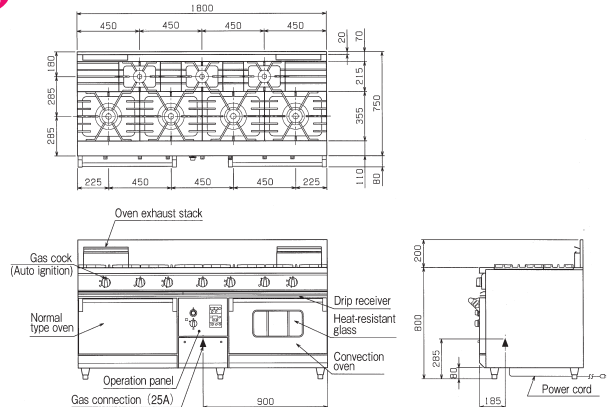
RGR-187XD
List Price : ¥998,000 (tax-excluded)

φ190 burner×4
φ95 burner×3

Oven
Normal type Convection

Model Change

Depth 900 mm



● NEW Power Cook Gas Range series also has "No back guard" type. Please specify when placing order. (The price is the same.)

■ Delivery date for the models with ☆mark is about 2 weeks after receipt of order.

RGR-0963XD

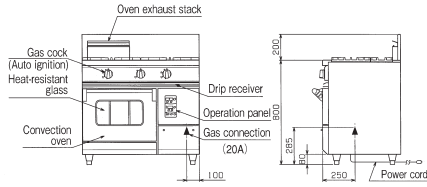
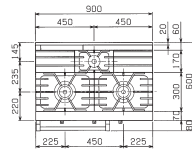
List Price : ¥428,000
(tax-excluded)

φ165 burner×2
φ95 burner×1

Oven
Convection



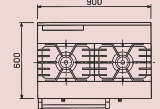
Model Change



RGR-0962XD☆

List Price : ¥418,000
(tax-excluded)

φ165 burner×2



RGR-1264XD

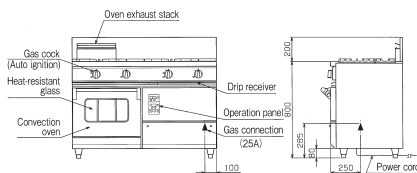
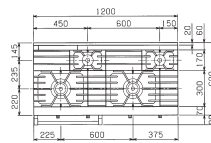
List Price : ¥508,000
(tax-excluded)

φ165 burner×2
φ95 burner×2

Oven
Convection



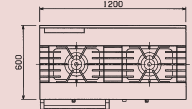
Model Change



RGR-1262XD☆

List Price : ¥498,000
(tax-excluded)

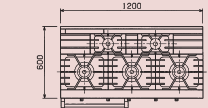
φ165 burner×2



RGR-1265XD

List Price : ¥548,000
(tax-excluded)

φ165 burner×3 φ95 burner×2



RGR-1565WXD

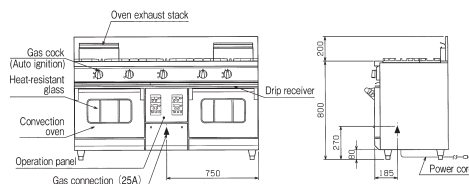
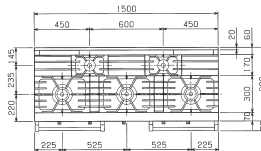
List Price : ¥848,000
(tax-excluded)

φ165 burner×3
φ95 burner×2

Oven
Convection Convection



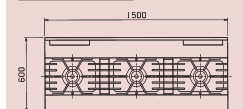
Model Change



RGR-1563WXD☆

List Price : ¥838,000
(tax-excluded)

φ165 burner×3



RGR-0973XD

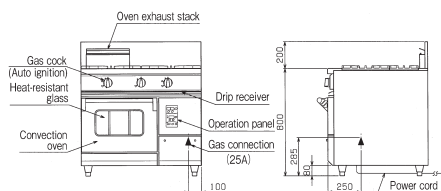
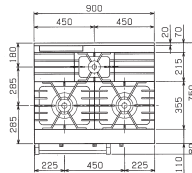
List Price : ¥468,000
(tax-excluded)

φ190 burner×2
φ95 burner×1

Oven
Convection



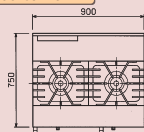
Model Change



RGR-0972XD☆

List Price : ¥458,000
(tax-excluded)

φ190 burner×2



Depth
600
mm

Depth
750
mm

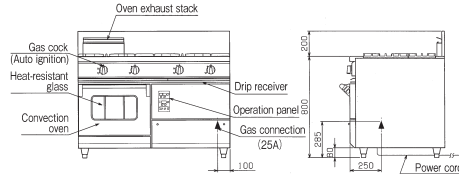
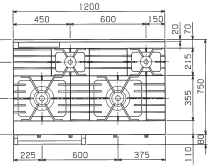
RGR-1274XD

List Price : ¥538,000
(tax-excluded)

φ190 burner×2
φ95 burner×2

Oven
Convection

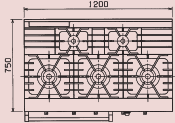
Model Change



RGR-1275XD

List Price : ¥568,000
(tax-excluded)

φ190 burner×3 φ95 burner×2



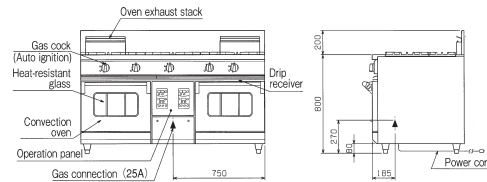
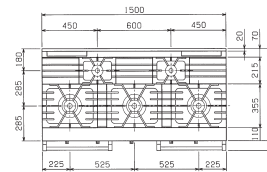
RGR-1575WXD

List Price : ¥898,000
(tax-excluded)

φ190 burner×3
φ95 burner×2

Oven
Convection Convection

Model Change



Depth
750
mm

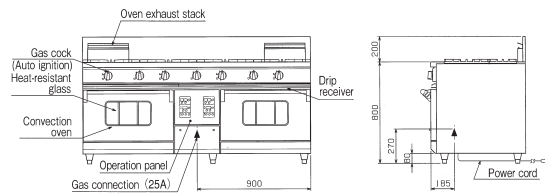
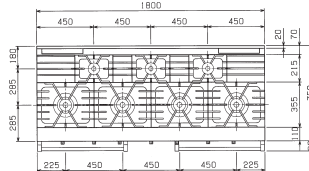
RGR-187WXD

List Price : ¥1,048,000
(tax-excluded)

φ190 burner×4
φ95 burner×3

Oven
Convection Convection

Model Change



RGR-1812WXD ☆

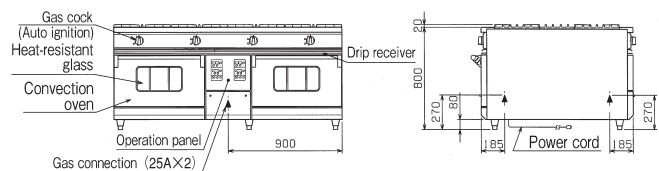
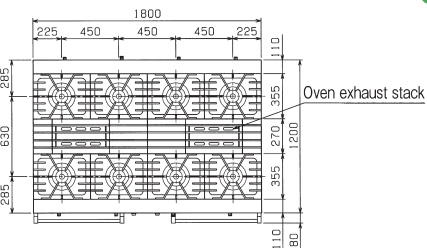
List Price : ¥1,380,000
(tax-excluded)

φ190 burner×8

Oven
Convection Convection

Model Change

Double-sided top



Depth
1200
mm

●NEW Power Cook Gas Range series also has "No back guard" type. Please specify when placing order. (The price is the same.)

■Delivery date for the models with ☆mark is about 2 weeks after receipt of order.

Specifications Table



RGR-0963D

NEW Power Cook Gas Range [Equipped with New Universal Burner / Normal type Oven] Specifications Table <RGR> See pages 3 and 4.

Model	External dimension (mm)				Inside of oven usable dimension (mm)			Usable side	No. of ^{※1} top burners			No. of ovens	Gas consumption		Gas connection (union)	Accessories			Weight (kg)
	Width	Depth	Height	Back height	Width	Depth	Height		φ95	φ165	φ190		Town gas	LP gas		Grill	Tray	Grill pan handle	
RGR-0962D	900	600	800	200	460	460	320	Single	—	2	—	1	34.3kW (29,500kcal/h)	33.1kW (2.38kg/h)	20A	2	2	1	159
RGR-0963D	900	600	800	200	460	460	320	Single	1	2	—	1	39.0kW (33,500kcal/h)	37.2kW (2.67kg/h)	20A	2	2	1	170
RGR-1262D	1,200	600	800	200	565	460	320	Single	—	2	—	1	36.0kW (31,000kcal/h)	34.9kW (2.50kg/h)	25A	2	2	1	182
RGR-1264D	1,200	600	800	200	565	460	320	Single	2	2	—	1	45.3kW (39,000kcal/h)	43.0kW (3.08kg/h)	25A	2	2	1	196
RGR-1265D	1,200	600	800	200	565	460	320	Single	2	3	—	1	58.7kW (50,500kcal/h)	55.8kW (4.00kg/h)	25A	2	2	1	199
RGR-1563D	1,500	600	800	200	460	460	320	Single	—	3	—	2	55.2kW (47,500kcal/h)	53.5kW (3.83kg/h)	25A	4	4	2	245
RGR-1565D	1,500	600	800	200	460	460	320	Single	2	3	—	2	64.5kW (55,500kcal/h)	61.6kW (4.42kg/h)	25A	4	4	2	264
RGR-0972D	900	750	800	200	460	600	320	Single	—	—	2	1	43.0kW (37,000kcal/h)	41.9kW (3.00kg/h)	25A	2	2	1	173
RGR-0973D	900	750	800	200	460	600	320	Single	1	—	2	1	48.3kW (41,500kcal/h)	46.5kW (3.33kg/h)	25A	2	2	1	187
RGR-1274D	1,200	750	800	200	565	600	320	Single	2	—	2	1	54.7kW (47,000kcal/h)	52.3kW (3.75kg/h)	25A	2	2	1	227
RGR-1275D	1,200	750	800	200	565	600	320	Single	2	—	3	1	71.5kW (61,500kcal/h)	68.6kW (4.92kg/h)	25A	2	2	1	230
RGR-1573D	1,500	750	800	200	460	600	320	Single	—	—	3	2	69.2kW (59,500kcal/h)	67.4kW (4.83kg/h)	25A	4	4	2	304
RGR-1575D	1,500	750	800	200	460	600	320	Single	2	—	3	2	79.7kW (68,500kcal/h)	76.7kW (5.50kg/h)	25A	4	4	2	326
RGR-187D	1,800	750	800	200	565	600	320	Single	3	—	4	2	104kW (89,500kcal/h)	100kW (7.17kg/h)	25A	4	4	2	363
RGR-1812D	1,800	1,200	800	—	565	1,050	320	Double	—	—	8	2	158kW (136,000kcal/h)	154kW (11.0kg/h)	25A×2	8	8	2	556

※1 Maximum pot diameter for φ95 burner is φ280mm and for φ165/190 burner is φ400mm.



RGR-1565XD



RGR-1264XD

NEW Power Cook Gas Range [Equipped with New Universal Burner / Convection Oven] Specifications Table <RGR-X> See pages 5~7.

Model	External dimension (mm)			Inside of oven usable dimension (mm)			Inside of convection usable dimension (mm)			Usable side	No. of ^{※1} top burners			No. of ovens	No. of convec-tions	Gas consumption		Gas connec-tion (union)	Power (50/60Hz)	Power consumption (50/60Hz)	Power cord	Accessories for oven (Accessories for Normal type Oven)			Weight (kg)	
	Width	Depth	Height	Width	Depth	Height	Width	Depth	Height		φ 95	φ 165	φ 190			Town gas	LP gas					Grill	Tray	Grill pan handle		
Normal type Oven + Convection Oven	RGR-1565XD	1,500	600	800	200	460	460	320	420	300	320	Single	2	3	—	1	1	64.5kW (55,500kcal/h)	61.6kW (4.42kg/h)	25A	1φ100V	74W/84W	2	2	2	267
	RGR-1575XD	1,500	750	800	200	460	600	320	420	400	320	Single	2	—	3	1	1	77.9kW (67,000kcal/h)	75.0kW (5.38kg/h)	25A	1φ100V	74W/84W	2	2	2	316
	RGR-187XD	1,800	750	800	200	565	600	320	565	400	320	Single	3	—	4	1	1	101.0kW (87,000kcal/h)	97.1kW (6.96kg/h)	25A	1φ100V	74W/84W	2	2	2	357
Convection Oven only	RGR-0962XD	900	600	800	200	—	—	—	420	300	320	Single	—	2	—	—	1	34.3kW (29,500kcal/h)	33.1kW (2.38kg/h)	20A	1φ100V	74W/84W	2	2	1	144
	RGR-0963XD	900	600	800	200	—	—	—	420	300	320	Single	1	2	—	—	1	39.0kW (33,500kcal/h)	37.2kW (2.67kg/h)	20A	1φ100V	74W/84W	2	2	1	155
	RGR-1262XD	1,200	600	800	200	—	—	—	420	300	320	Single	—	2	—	—	1	34.3kW (29,500kcal/h)	33.1kW (2.38kg/h)	25A	1φ100V	74W/84W	2	2	1	173
	RGR-1264XD	1,200	600	800	200	—	—	—	420	300	320	Single	2	2	—	—	1	43.6kW (37,500kcal/h)	41.3kW (2.96kg/h)	25A	1φ100V	74W/84W	2	2	1	187
	RGR-1265XD	1,200	600	800	200	—	—	—	420	300	320	Single	2	3	—	—	1	57.0kW (49,000kcal/h)	54.1kW (3.88kg/h)	25A	1φ100V	74W/84W	2	2	1	189
	RGR-1563WXD	1,500	600	800	200	—	—	—	420	300	320	Single	—	3	—	—	2	55.2kW (47,500kcal/h)	53.5kW (3.83kg/h)	25A	1φ100V	148W/168W	4	4	2	234
	RGR-1565WXD	1,500	600	800	200	—	—	—	420	300	320	Single	2	3	—	—	2	64.5kW (55,500kcal/h)	61.6kW (4.42kg/h)	25A	1φ100V	148W/168W	4	4	2	252
	RGR-0972XD	900	750	800	200	—	—	—	420	400	320	Single	—	—	2	—	1	41.3kW (35,500kcal/h)	40.1kW (2.88kg/h)	25A	1φ100V	74W/84W	2	2	1	163
	RGR-0973XD	900	750	800	200	—	—	—	420	400	320	Single	1	—	2	—	1	46.5kW (40,000kcal/h)	44.8kW (3.21kg/h)	25A	1φ100V	74W/84W	2	2	1	177
	RGR-1274XD	1,200	750	800	200	—	—	—	420	400	320	Single	2	—	2	—	1	51.7kW (44,500kcal/h)	49.4kW (3.54kg/h)	25A	1φ100V	74W/84W	2	2	1	215
	RGR-1275XD	1,200	750	800	200	—	—	—	420	400	320	Single	2	—	3	—	1	68.6kW (59,000kcal/h)	65.7kW (4.71kg/h)	25A	1φ100V	74W/84W	2	2	1	217
	RGR-1575WXD	1,500	750	800	200	—	—	—	420	400	320	Single	2	—	3	—	2	76.2kW (65,500kcal/h)	73.3kW (5.25kg/h)	25A	1φ100V	148W/168W	4	4	2	306
	RGR-187WXD	1,800	750	800	200	—	—	—	565	400	320	Single	3	—	4	—	2	98.3kW (84,500kcal/h)	94.2kW (6.75kg/h)	25A	1φ100V	148W/168W	4	4	2	351
	RGR-1812WXD	1,800	1,200	800	—	—	—	—	565	400	320	Top double	—	—	8	—	2	150kW (129,000kcal/h)	145kW (10.4kg/h)	25A×2	1φ100V	148W/168W	4	4	2	544

※RGR-1812WXD has a cabinet incorporated. (Inner dimension 615×360×390)

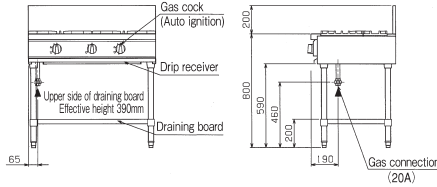
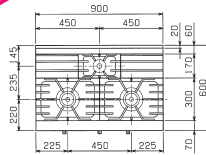
※1 Maximum pot diameter for φ95 burner is φ280mm and for φ165/190 burner is φ400mm.

RGT-0963D

List Price : ¥157,000 (tax-excluded)

φ165 burner×2
φ95 burner×1

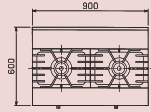
Model Change



RGT-0962D

List Price : ¥145,000 (tax-excluded)

φ165 burner×2

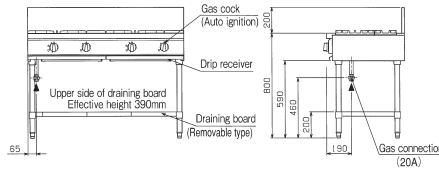
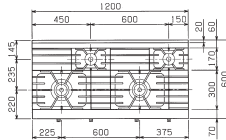


RGT-1264D

List Price : ¥183,000 (tax-excluded)

φ165 burner×2
φ95 burner×2

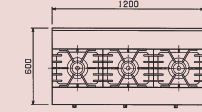
Model Change



RGT-1263D

List Price : ¥196,000 (tax-excluded)

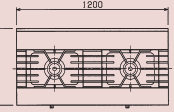
φ165 burner×3



RGT-1262D

List Price : ¥173,000 (tax-excluded)

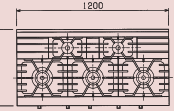
φ165 burner×2



RGT-1265D

List Price : ¥214,000 (tax-excluded)

φ165 burner×3 φ95 burner×2



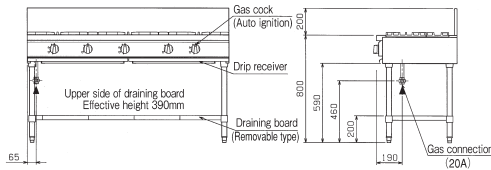
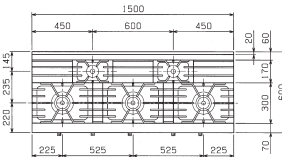
Depth 600 mm

RGT-1565D

List Price : ¥224,000 (tax-excluded)

φ165 burner×3
φ95 burner×2

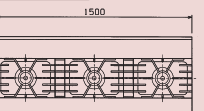
Model Change



RGT-1563D

List Price : ¥218,000 (tax-excluded)

φ165 burner×3

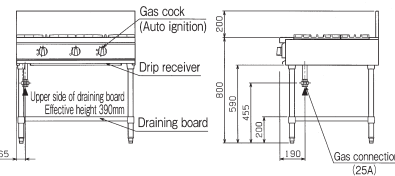
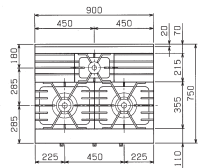


RGT-0973D

List Price : ¥167,000 (tax-excluded)

φ190 burner×2
φ95 burner×1

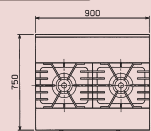
Model Change



RGT-0972D☆

List Price : ¥160,000 (tax-excluded)

φ190 burner×2



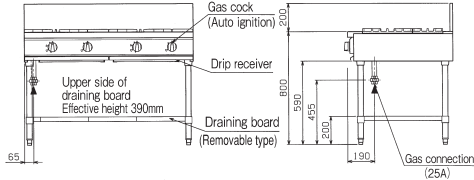
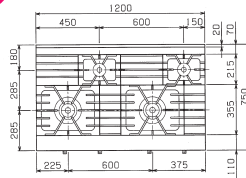
Depth 750 mm

RGT-1274D

List Price : ¥210,000
(tax-excluded)

φ190 burner×2
φ95 burner×2

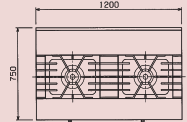
Model Change



RGT-1272D☆

List Price : ¥193,000
(tax-excluded)

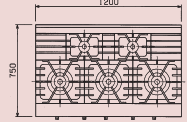
φ190 burner×2



RGT-1275D

List Price : ¥240,000
(tax-excluded)

φ190 burner×3 φ95 burner×2

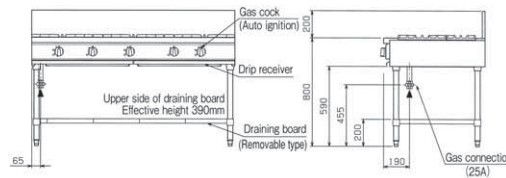
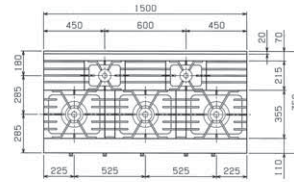


RGT-1575D

List Price : ¥255,000
(tax-excluded)

φ190 burner×3
φ95 burner×2

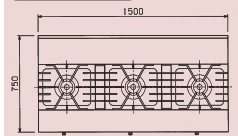
Model Change



RGT-1573D

List Price : ¥226,000
(tax-excluded)

φ190 burner×3



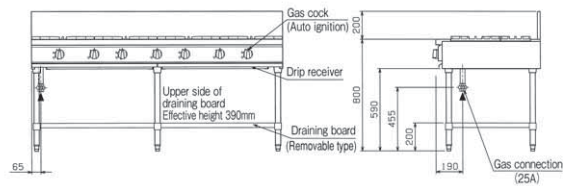
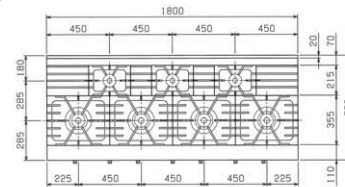
Depth
750
mm

RGT-187D

List Price : ¥380,000
(tax-excluded)

φ190 burner×4
φ95 burner×3

Model Change



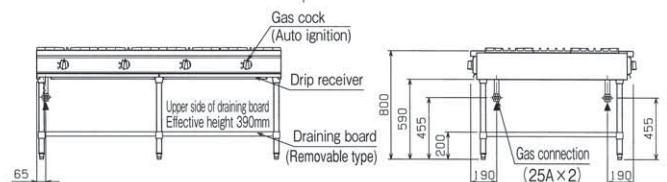
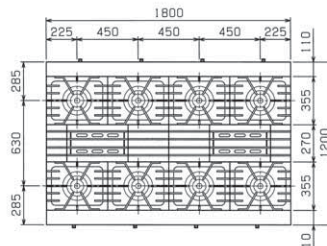
RGT-1812D☆

List Price : ¥550,000
(tax-excluded)

φ190 burner×8

Model Change

Double-sided



Depth
1200
mm

■Delivery date for the models with ☆mark is about 2 weeks after receipt of order.

NEW Power Cook Gas Range / Gas Table (Equipped with "Maruzen «Oyako» burner")

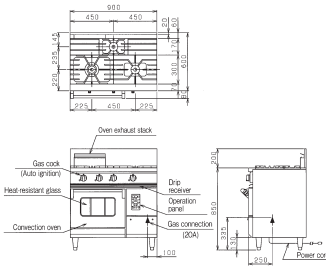
Depth **600** mm

RGR-J0963XD ☆
List Price : ¥458,000 (tax-excluded)

φ145 burner×1
φ90 burner×2



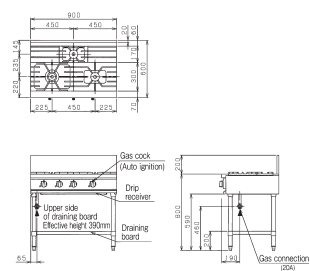
※Height 850mm



Model Change

RGT-J0963D ☆
List Price : ¥187,000 (tax-excluded)

φ145 burner×1
φ90 burner×2



Model Change

NEW

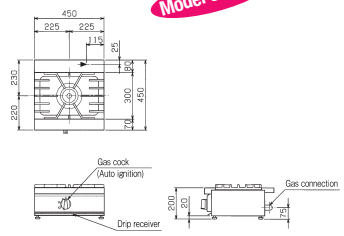
Power Cook Gas Table Stove (Equipped with New Universal Burner)

Gas stoves with PS mark represent products in conformity to the technical standards specified by the government of Japan.

Depth **450** mm

RGC-044D
List Price : ¥51,000 (tax-excluded)

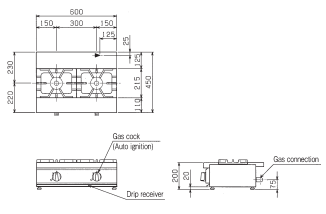
φ165 burner×1



Model Change

RGC-064D
List Price : ¥68,000 (tax-excluded)

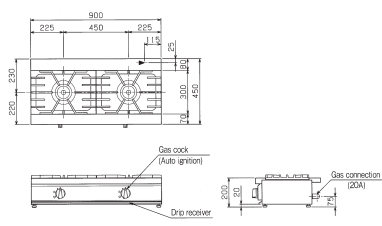
φ95 burner×2



Model Change

RGC-094D
List Price : ¥91,000 (tax-excluded)

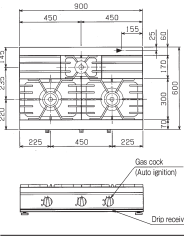
φ165 burner×2



Model Change

RGC-096D
List Price : ¥101,000 (tax-excluded)

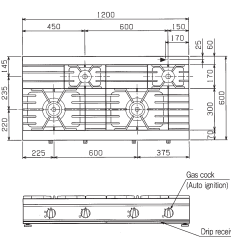
φ165 burner×2
φ95 burner×1



Model Change

RGC-1264D
List Price : ¥144,000 (tax-excluded)

φ165 burner×2
φ95 burner×2

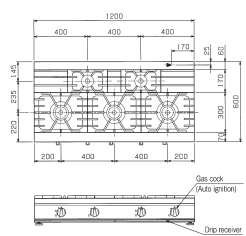


Model Change

Depth **600** mm

RGC-1265D
List Price : ¥146,000 (tax-excluded)

φ165 burner×3
φ95 burner×2



Model Change

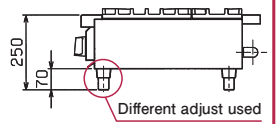
NEW Power Cook Gas Table Stove Depth 600mm type has Height 250mm spec. (The price is the same.)

RGC-096HD
List Price : ¥101,000 (tax-excluded)

RGC-1264HD
List Price : ¥144,000 (tax-excluded)

RGC-1265HD
List Price : ¥146,000 (tax-excluded)

Combining with the drawer table whose height of the main body is 550mm, the top height becomes 800mm, which enables to easily align the height with that of adjacent equipment.



■ Delivery date is about 2 weeks after receipt of order.

■ Delivery date for the models with ☆ mark is about 1 month from the receipt of order.

Depth 600 mm

RGS-066D
List Price : ¥114,000
(tax-excluded)

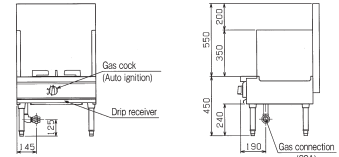
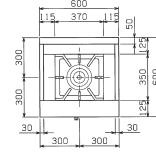
φ165 burner×1



Shortened the boiling time due to the improved thermal efficiency!



Model Change



※Please use stockpot of φ270~450mm.

●Side guards are removable.

RGS-096D
List Price : ¥165,000
(tax-excluded)

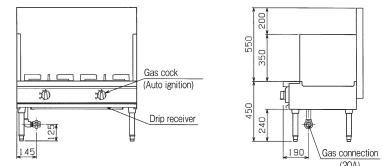
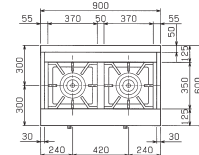
φ165 burner×2



Shortened the boiling time due to the improved thermal efficiency!



Model Change



※Please use stockpot of φ270~400mm.

●Side guards are removable.

RGS-126D
List Price : ¥185,000
(tax-excluded)

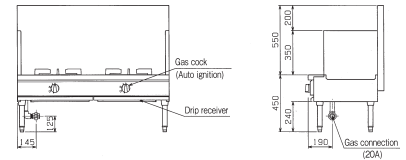
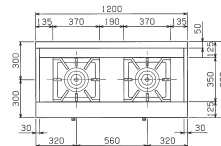
φ165 burner×2



Shortened the boiling time due to the improved thermal efficiency!



Model Change



※Please use stockpot of φ270~450mm.

●Side guards are removable.

Depth 750 mm

RGS-067D
List Price : ¥131,000
(tax-excluded)

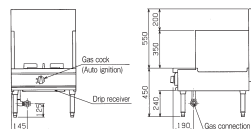
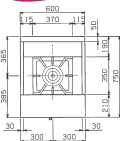
φ165 burner×1



Shortened the boiling time due to the improved thermal efficiency!



Model Change



※Please use stockpot of φ270~450mm.

●Side guards are removable.

RGS-077D
List Price : ¥134,000
(tax-excluded)

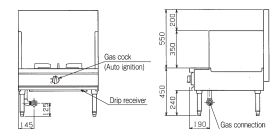
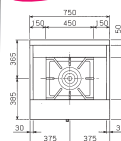
φ190 burner×1



Shortened the boiling time due to the improved thermal efficiency!



Model Change



※Please use stockpot of φ300~540mm.

RGS-137D
List Price : ¥199,000
(tax-excluded)

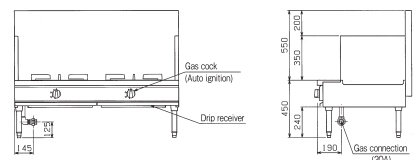
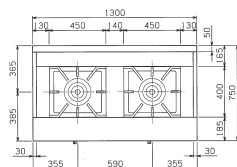
φ190 burner×2



Shortened the boiling time due to the improved thermal efficiency!



Model Change



※Please use stockpot of φ300~540mm.

●Side guards are removable.

NEW Power Cook Heat Top Range

Depth 750 mm

RHT-097SD
List Price : ¥618,000 (tax-excluded)

Oven Normal type

Model Change



RHT-097WD
List Price : ¥898,000 (tax-excluded)

Oven Normal type

Model Change



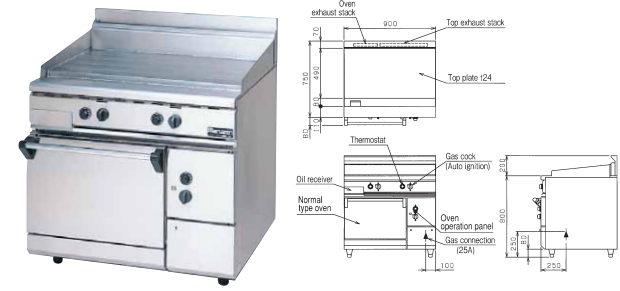
NEW Power Cook Fry Top Range

Depth 750 mm

RFT-097D
List Price : ¥645,000 (tax-excluded)

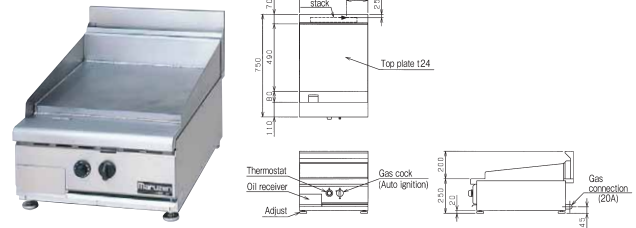
Oven Normal type

Model Change



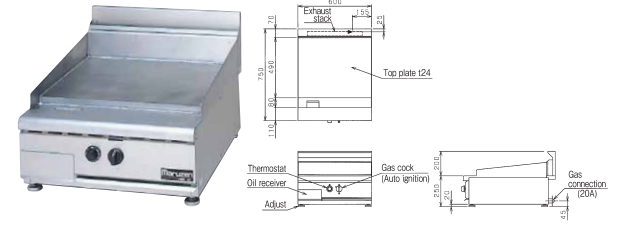
RFT-057T
List Price : ¥338,000 (tax-excluded)

Tabletop



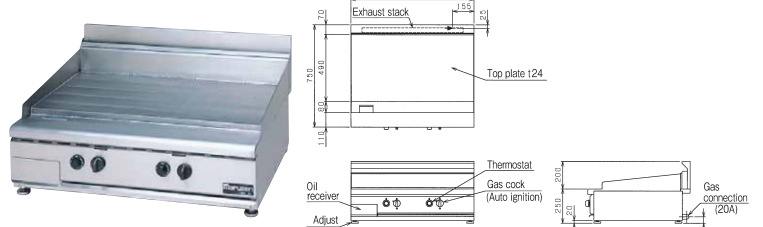
RFT-067T
List Price : ¥378,000 (tax-excluded)

Tabletop



RFT-097T
List Price : ¥528,000 (tax-excluded)

Tabletop

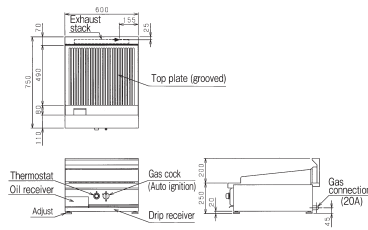


NEW Power Cook Grooved Griddle

Depth 750 mm

RGG-067T☆
List Price : ¥490,000 (tax-excluded)

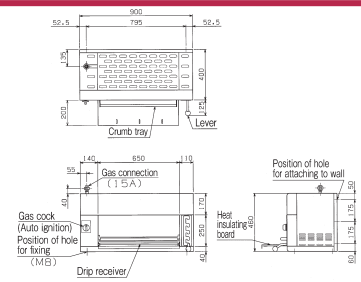
Tabletop



NEW Power Cook Salamander

Depth 400 mm

RSM-094
List Price : ¥288,000 (tax-excluded)



■ Delivery date for the models with ☆ mark is about 2 weeks after receipt of order.

The Model of char broiler changed!

Easier to control the heating power by using gas cock with position.

Gas cock has 3 steps position (low, medium, high), so that you can control the heating power easily according to food stuffs and menus.



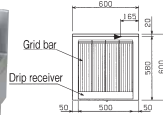
Gas Cock with position

Depth
600
mm

RCB-066TB

List Price : ¥250,000 (tax-excluded)

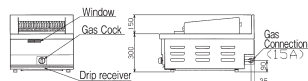
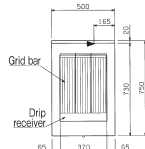
Tabletop



RCB-057TB

List Price : ¥232,000 (tax-excluded)

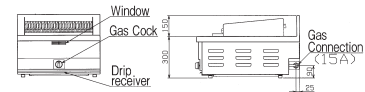
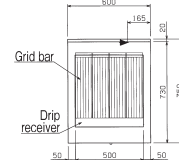
Tabletop



RCB-067TB

List Price : ¥269,000 (tax-excluded)

Tabletop



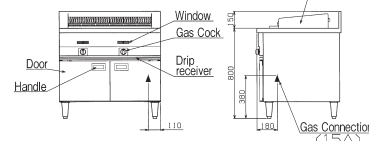
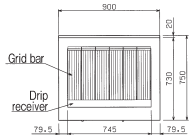
Depth
750
mm

RCB-097B

List Price : ¥610,000 (tax-excluded)



Lava stones
Refer to P2 for detail.

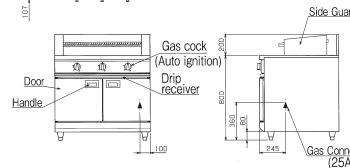
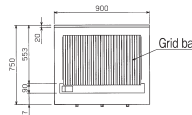


There is one model for which front design is the same as other New Power Cook series products.

RCB-097 (Production by order)

List Price : ¥610,000 (tax-excluded)

Lava stones
Refer to P2 for detail.



- If you install this next to the other New Power Cook series products, you can arrange the uniform design.
- Gas cock has 2 steps position: low, high.

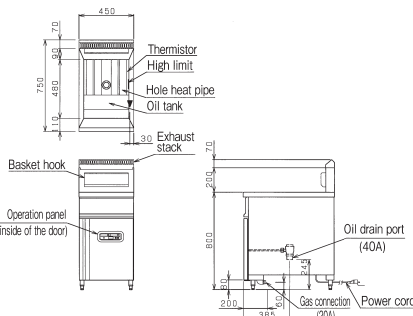
NEW Power Cook Fryer Fast Food Type

RXF-047FC★

List Price : ¥360,000 (tax-excluded)

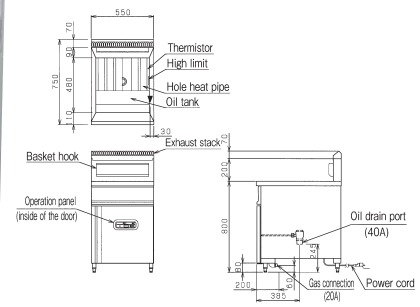


Depth
750
mm



RXF-057FC★

List Price : ¥395,000 (tax-excluded)

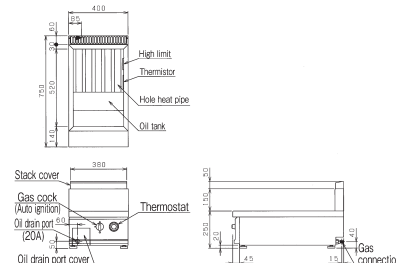


NEW Power Cook Fryer Tabletop Type

RGF-047T★

List Price : ¥168,000 (tax-excluded)

Depth
750
mm



■Delivery date for the models with ★mark is about 3 weeks from receipt of order.

Specifications Table



NEW Power Cook Gas Table [Equipped with New Universal Burner] Specifications Table <RGT> [See pages 9 and 10.](#)

RGT-0963D

Model	External dimension (mm)				Usable side	No. of top burners ^{※1}			Gas consumption		Gas connection (union)	Weight (kg)
	Width	Depth	Height	Back height		φ95	φ165	φ190	Town gas	LP gas		
RGT-0962D	900	600	800	200	Single	—	2	—	26.7kW (23,000kcal/h)	25.6kW (1.83kg/h)	20A	74
RGT-0963D	900	600	800	200	Single	1	2	—	31.4kW (27,000kcal/h)	29.7kW (2.13kg/h)	20A	82
RGT-1262D	1,200	600	800	200	Single	—	2	—	26.7kW (23,000kcal/h)	25.6kW (1.83kg/h)	20A	99
RGT-1263D	1,200	600	800	200	Single	—	3	—	40.1kW (34,500kcal/h)	38.4kW (2.75kg/h)	20A	102
RGT-1264D	1,200	600	800	200	Single	2	2	—	36.0kW (31,000kcal/h)	33.7kW (2.42kg/h)	20A	113
RGT-1265D	1,200	600	800	200	Single	2	3	—	49.4kW (42,500kcal/h)	46.5kW (3.33kg/h)	20A	116
RGT-1563D	1,500	600	800	200	Single	—	3	—	40.1kW (34,500kcal/h)	38.4kW (2.75kg/h)	20A	118
RGT-1565D	1,500	600	800	200	Single	2	3	—	49.4kW (42,500kcal/h)	46.5kW (3.33kg/h)	20A	135
RGT-0972D	900	750	800	200	Single	—	—	2	33.7kW (29,000kcal/h)	32.6kW (2.33kg/h)	25A	93
RGT-0973D	900	750	800	200	Single	1	—	2	39.0kW (33,500kcal/h)	37.2kW (2.67kg/h)	25A	104
RGT-1272D	1,200	750	800	200	Single	—	—	2	33.7kW (29,000kcal/h)	32.6kW (2.33kg/h)	25A	113
RGT-1274D	1,200	750	800	200	Single	2	—	2	44.2kW (38,000kcal/h)	41.9kW (3.00kg/h)	25A	130
RGT-1275D	1,200	750	800	200	Single	2	—	3	61.0kW (52,500kcal/h)	58.1kW (4.17kg/h)	25A	132
RGT-1573D	1,500	750	800	200	Single	—	—	3	50.6kW (43,500kcal/h)	48.8kW (3.50kg/h)	25A	133
RGT-1575D	1,500	750	800	200	Single	2	—	3	61.0kW (52,500kcal/h)	58.1kW (4.17kg/h)	25A	151
RGT-187D	1,800	750	800	200	Single	3	—	4	83.1kW (71,500kcal/h)	79.1kW (5.67kg/h)	25A	192
RGT-1812D	1,800	1,200	800	—	Double	—	—	8	135kW (116,000kcal/h)	130kW (9.33kg/h)	25A×2	279

※1 Maximum pot diameter for φ95 burner is φ280mm and for φ165/190 burner is φ400mm.



NEW Power Cook Gas Range / Gas Table [Equipped with "Maruzen 《Oyako》 burner"] <RGR, RGT> [See pages 11.](#)

RGR-J0963XD

Model	External dimension (mm)				Inside of oven usable dimension (mm)			Usable side	No. of top burners ^{※1}			No. of convention ovens	Gas consumption		Gas connection (union)	Rated voltage (50/60Hz)	Power consumption (50/60Hz)	Power cord	Accessories			Weight (kg)
	Width	Depth	Height	Back height	Width	Depth	Height		L	M	S		Town gas	LP gas					Grill	Tray	Grill pan handle	
RGR-J0963XD	900	600	850	200	420	300	320	Single	1	1	1	1	26.8kW (23,000kcal/h)	26.2kW (1.88kg/h)	20A	1φ100V	74W/84W	2.5m with plug (ground wire) (⚡)	2	2	1	151
RGT-J0963D	900	600	800	200	—	—	—	Single	1	1	1	—	19.2kW (16,500kcal/h)	18.6kW (1.33kg/h)	20A	—	—	—	—	—	—	79

※1 Maximum pot diameter for φ90 burner is φ280mm and for φ145 burner is φ360mm.



NEW Power Cook Gas Table Stove [Equipped with New Universal Burner] Specifications Table <RGC> [See pages 11.](#)

RGC-096D

Model	External dimension (mm)			No. of top burners ^{※1}		Gas consumption		Gas Connection		Weight (kg)
	Width	Depth	Height	φ95	φ165	Town gas	LP gas	13A, 12A	LP gas	
RGC-044D	450	450	200	—	1	13.4kW (11,500kcal/h)	12.8kW (0.92kg/h)	13mm rubber tube end	9.5mm rubber tube end	22
RGC-064D	600	450	200	2	—	10.5kW (9,000kcal/h)	9.3kW (0.67kg/h)	13mm rubber tube end※	9.5mm rubber tube end	25
RGC-094D	900	450	200	—	2	26.7kW (23,000kcal/h)	25.6kW (1.83kg/h)	20A	20A	42
RGC-096 (H) D	900	600	200 (250)	1	2	31.4kW (27,000kcal/h)	29.7kW (2.13kg/h)	20A	20A	58
RGC-1264 (H) D	1,200	600	200 (250)	2	2	36.0kW (31,000kcal/h)	33.7kW (2.42kg/h)	20A	20A	74
RGC-1265 (H) D	1,200	600	200 (250)	2	3	49.4kW (42,500kcal/h)	46.5kW (3.33kg/h)	20A	20A	81

※1 Maximum pot diameter for φ95 burner is φ280mm and for φ165 burner is φ400mm.

■ (H) is Height 250mm spec. (The price is the same).

■ Screw connection or rober tube connection for 044D and 064D, screw connection for the other models.

※ Town gas 13A only.



NEW Power Cook Soup Range [Equipped with New Universal Burner] Specifications Table <RGS> [See pages 12.](#)

RGS-066D

Model	External dimension (mm)				No. of top burners ^{※1}		Gas consumption		Gas connection (union)	Weight (kg)
	Width	Depth	Height	Back height	φ165	φ190	Town gas	LP gas		
RGS-066D	600	600	450	550	1	—	14.5kW (12,500kcal/h)	14.0kW (1.00kg/h)	20A	57
RGS-096D	900	600	450	550	2	—	29.1kW (25,000kcal/h)	27.9kW (2.00kg/h)	20A	83
RGS-126D	1,200	600	450	550	2	—	29.1kW (25,000kcal/h)	27.9kW (2.00kg/h)	20A	93
RGS-067D	600	750	450	550	1	—	14.5kW (12,500kcal/h)	14.0kW (1.00kg/h)	20A	66
RGS-077D	750	750	450	550	—	1	18.0kW (15,500kcal/h)	17.4kW (1.25kg/h)	20A	74
RGS-137D	1,300	750	450	550	—	2	36.0kW (31,000kcal/h)	34.9kW (2.50kg/h)	20A	114

※1 Refer to P12 for the available pot diameter.



RHT-097SD

■NEW Power Cook Heat Top Range Specifications Table <RHT> See pages 13.

Model	External dimension (mm)				Inside of oven usable dimension (mm)			No. of burners (ring burner)	No. of ovens	Gas consumption		Gas connection (union)	Accessories				Weight (kg)
	Width	Depth	Height	Back height	Width	Depth	Height			Town gas	LP gas		Grill	Tray	Grill pan handle	Ring handle	
RHT-097SD	900	750	800	200	460	600	320	large 1	1	21.5kW (18,500kcal/h)	21.5kW (1.54kg/h)	25A	2	2	1	1	282
RHT-097WD	900	750	800	200	460	600	320	small 2	1	24.4kW (21,000kcal/h)	24.4kW (1.75kg/h)	25A	2	2	1	1	289



RFT-097D

■NEW Power Cook Fry Top Range Specifications Table <RFT> See pages 13.

Model	External dimension (mm)				Inside of oven usable dimension (mm)			No. of burners (infrared burner)	No. of ovens	Gas consumption		Gas connection	Accessories			Weight (kg)
	Width	Depth	Height	Back height	Width	Depth	Height			Town gas	LP gas		Grill	Tray	Ring handle	
RFT-097D	900	750	800	200	460	600	320	6	1	25.8kW (22,200kcal/h)	25.8kW (1.85kg/h)	25A union	2	2	1	277
RFT-057T	500	750	250	200	—	—	—	3	—	8.84kW (7,600kcal/h)	8.84kW (0.63kg/h)	20 A	—	—	—	107
RFT-067T	600	750	250	200	—	—	—	4	—	11.4kW (9,800kcal/h)	11.4kW (0.82kg/h)	20 A	—	—	—	127
RFT-097T	900	750	250	200	—	—	—	6	—	17.7kW (15,200kcal/h)	17.7kW (1.27kg/h)	20 A	—	—	—	184



RGG-067T

■NEW Power Cook Grooved Griddle Specifications Table <RGG> See pages 13.

Model	External dimension (mm)				No. of burners (infrared burner)	Gas consumption		Gas connection	Weight (kg)
	Width	Depth	Height	Back height		Town gas	LP gas		
RGG-067T	600	750	250	200	4	11.4kW (9,800kcal/h)	11.4kW (0.82kg/h)	20A	124



RSM-094

■NEW Power Cook Salamander Specifications Table <RSM> See pages 13.

Model	External dimension (mm)			Usable inside dimension (mm)			No. of burners (infrared burner)	Gas consumption		Gas connection (union)	Accessories		Weight (kg)
	Width	Depth	Height	Width	Depth	Height		Town gas	LP gas		Grill	Metal fittings for wall	
RSM-094	900	400	460	650	375	250	2	7.09kW (6,100kcal/h)	7.09kW (0.51kg/h)	15A	1	1set	63



RCB-066TB



RCB-097B

■NEW Power Cook Charbroiler Specifications Table <RCB> See pages 14.

Model	External dimension (mm)				No. of burners	Gas consumption		Gas connection	Weight (kg)
	Width	Depth	Height	Back height		Town gas	LP gas		
RCB-066TB	600	600	300	150	2 (H Burner)	9.07kW (7,800kcal/h)	9.07kW (0.65kg/h)	15A	64
RCB-057TB	500	750	300	150	1 (Tripartite type Burner)	6.98kW (6,000kcal/h)	6.98kW (0.50kg/h)	15A	53
RCB-067TB	600	750	300	150	2 (H Burner)	9.07kW (7,800kcal/h)	9.07kW (0.65kg/h)	15A	65
RCB-097B	900	750	800	150	2 (Tripartite type Burner)	14.0kW (12,000kcal/h)	14.0kW (1.00kg/h)	15A union	95
RCB-097	900	750	800	200	6 (Bar Burner)	14.0kW (12,000kcal/h)	14.0kW (1.00kg/h)	25A union	143



RGF-047T



RXF-047FC

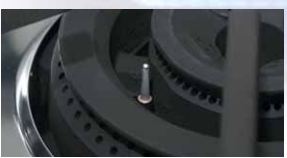
■NEW Power Cook Fryer Specifications Table <RXF/RGF> See pages 14.

Model	External dimension (mm)				Oil amount (ℓ)	Gas consumption		Gas connection		Power (50/60Hz)	Power consumption (50/60Hz)	Power cord	Accessories									Weight (kg)
	Width	Depth	Height	Back height		Town gas	LP gas	Town gas	LP gas				Lid	Parti-tion net	Oil tank	Oil screen	Frying basket	Basket hook	Skim-ming net	Front basket	Oil drain support	
RXF-047FC	450	750	800	200	28	15.1kW (13,000kcal/h)	13.4kW (0.96kg/h)	20A	20A	1φ100V	20W	2.5m with plug (ground adaptor)	1	1	2	1	2	1	—	—	—	60
RXF-057FC	550	750	800	200	36	17.4kW (15,000kcal/h)	14.5kW (1.04kg/h)	20A	20A	1φ100V	20W	(⚡)	1	1	2	2	3	1	—	—	—	74
RGF-047T	400	750	250	150	12	6.98kW (6,000kcal/h)	6.98kW (0.50kg/h)	13mm rubber tube end	9.5mm rubber tube end	—	—	—	1	1	1	—	—	—	1	1	1	24

New universal burner which Pilot safety shut off device equipped !

Pilot safety shut off device equipped type is newly released for the lineup of New power cook series. In case fire goes out accidentally from top burners, gas supply is automatically shut off. In addition to high power, high durability, and easy operation as same as before, it is more safe.

More safe with Pilot safety shut off device!
In case the fire goes out when low flame cooking or boil over, gas supply is automatically shut off which is safe.

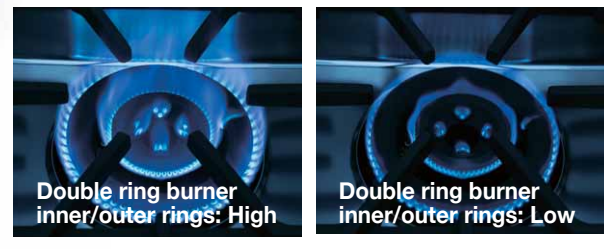


● Thermocouple

"Quick Ignition" is adopted!
Since quick ignition method is adopted, you can start cooking quickly after ignition

Continuous spark method which realizes certain ignition
Continuous spark method is adopted for the ignition of burners. It can ignite certainly.

● New universal burner with Pilot safety shut off device



- Fire power of both inner and outer ring can be adjusted by one gas cock. It is easy to adjust with power position mark.
- Large trivet is adopted for a hard use. The shape and design are thick and good in durability to make it easy to move heavy pots.

Enable to choose Normal type Oven or Convection Oven!

Normal type Oven

The oven is designed large enough to receive big-size pans. The inside temperature is set freely from 100 to 350°C.



Convection Oven

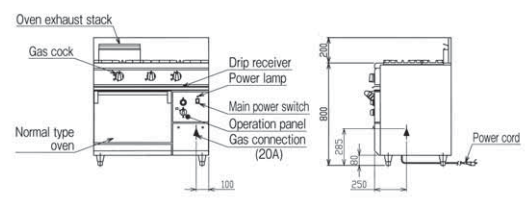
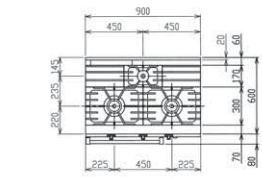
Quick serving or large volume cooking is OK by hot air circulation (system). The inside temperature is set freely from 100 to 300°C.



Large oven of normal type which is simple

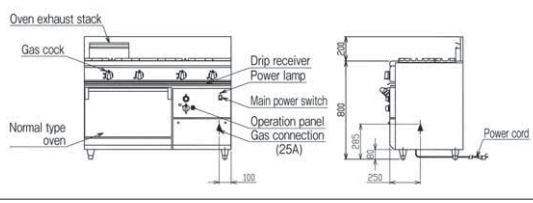
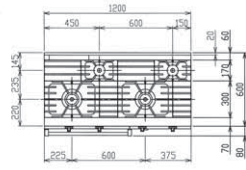
RGR-S096 ☆
List Price : ¥458,000 (tax-excluded)

- φ165 burner×2
- φ95 burner×1
- Pilot safety device
- Oven Normal type



RGR-S126 ☆
List Price : ¥548,000 (tax-excluded)

- φ165 burner×2
- φ95 burner×2
- Pilot safety device
- Oven Normal type



Depth 600 mm

■ Delivery date for the models with ☆ mark is about 2 weeks after receipt of order.

Gas range + convection oven combined. Improve the work efficiency extremely!

RGR-S096X☆

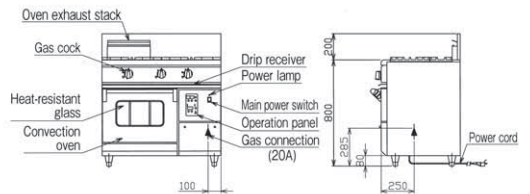
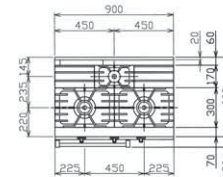
List Price : ¥508,000
(tax-excluded)



φ165 burner×2
φ95 burner×1

Pilot safety device

Oven
Convection



Depth
600
mm

RGR-S126X☆

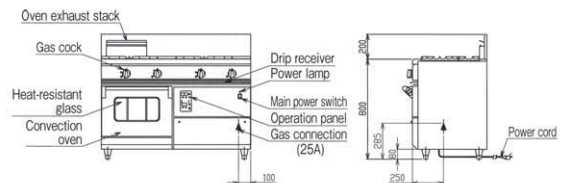
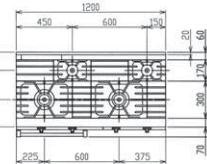
List Price : ¥598,000
(tax-excluded)



φ165 burner×2
φ95 burner×2

Pilot safety device

Oven
Convection



Power Cook Gas Range <Pilot safety shut off device equipped type>

Model	External dimension (mm)				Inside of oven usable dimension (mm)			Usable side	No. of ※1 top burners		No. of ovens	No. of convec-tions	Gas consumption		Gas connec-tion (union)	Power (50/60Hz)	Power consump-tion (50/60Hz)	Power cord	Accessories for oven			Weight (kg)
	Width	Depth	Height	Back height	Width	Depth	Height		Town gas	LP gas			Grill	Tray					Grill pan handle			
																				φ 95	φ 165	
RGR-S096	900	600	800	200	460	460	320	Single	1	2	1	—	38.9kW (33,500kcal/h)	37.2kW (2.68kg/h)	20A	1 φ 100V	0.3W	2.5m with plug (ground adaptor)	2	2	1	179
RGR-S126	1,200	600	800	200	565	460	320	Single	2	2	1	—	45.3kW (39,000kcal/h)	43.0kW (3.08kg/h)	25A	1 φ 100V	0.3W		2	2	1	208
RGR-S096X	900	600	800	200	420	300	320	Single	1	2	—	1	38.9kW (33,500kcal/h)	37.2kW (2.68kg/h)	20A	1 φ 100V	74W/84W		2	2	1	185
RGR-S126X	1,200	600	800	200	420	300	320	Single	2	2	—	1	43.6kW (37,500kcal/h)	41.3kW (2.96kg/h)	25A	1 φ 100V	74W/84W		2	2	1	217

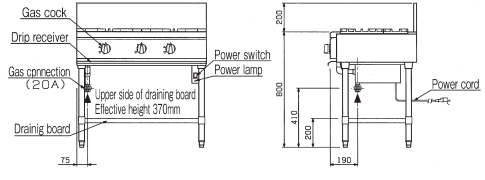
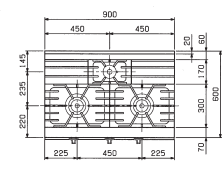
※ 1 Maximum pot diameter for φ95 burner is φ280mm and for φ165/190 burner is φ400mm.

RGT-S096 ☆

List Price : ¥248,000 (tax-excluded)

φ165 burner×2
φ95 burner×1

Pilot safety device

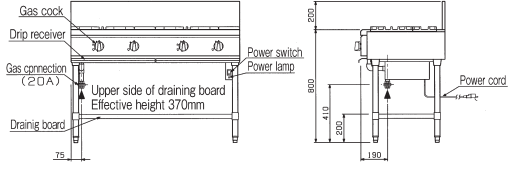
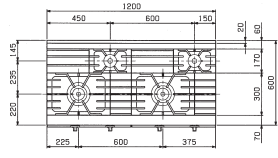


RGT-S126 ☆

List Price : ¥305,000 (tax-excluded)

φ165 burner×2
φ95 burner×2

Pilot safety device

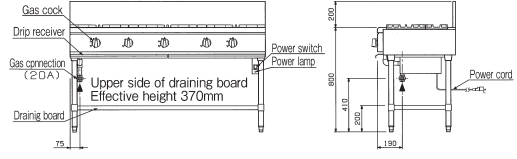
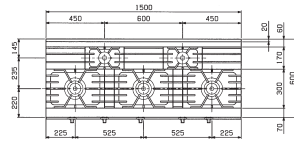


RGT-S156 ☆

List Price : ¥380,000 (tax-excluded)

φ165 burner×3
φ95 burner×2

Pilot safety device



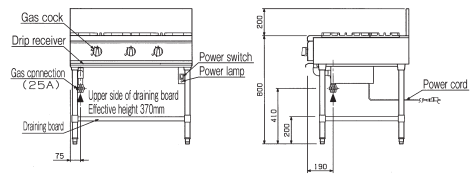
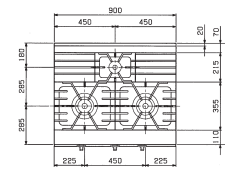
Depth 600 mm

● SUS304 is used for pipe legs and adjusts of NEW Power Cook Gas Table. ■ Delivery date for the models with ☆ mark is about 2 weeks after receipt of order.

RGT-S097☆
List Price : ¥263,000
(tax-excluded)

φ190 burner×2
φ95 burner×1

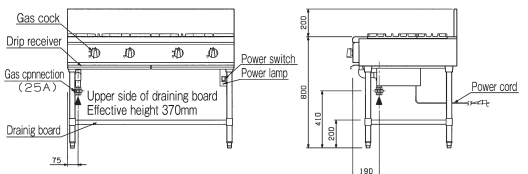
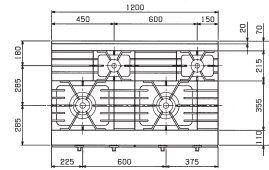
Pilot safety device



RGT-S127☆
List Price : ¥365,000
(tax-excluded)

φ190 burner×2
φ95 burner×2

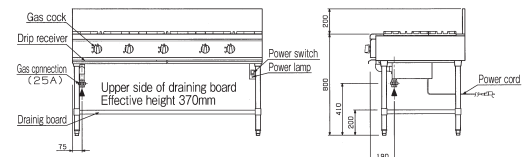
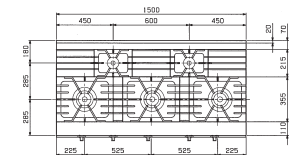
Pilot safety device



RGT-S157☆
List Price : ¥398,000
(tax-excluded)

φ190 burner×3
φ95 burner×2

Pilot safety device



Depth 750mm

NEW Power Cook Gas Table (Pilot safety shut off device equipped type) [Equipped with New Universal Burner] Specifications Table <RGT-S>

Model	External dimension (mm)				Usable side	No. of top burners ^{※1}			Gas consumption		Gas connection (union)	Power (50/60Hz)	Power consumption (50/60Hz)	Power cord	Weight (kg)
	Width	Depth	Height	Back height		φ95	φ165	φ190	Town gas	LP gas					
RGT-S096	900	600	800	200	Single	1	2	—	31.4kW (27,000kcal/h)	29.7kW (2.13kg/h)	20A	1φ100V	0.3W	2.5m with plug (ground adaptor)	93
RGT-S126	1,200	600	800	200	Single	2	2	—	36.0kW (31,000kcal/h)	33.7kW (2.42kg/h)	20A	1φ100V	0.3W		117
RGT-S156	1,500	600	800	200	Single	2	3	—	49.4kW (42,500kcal/h)	46.5kW (3.33kg/h)	20A	1φ100V	0.3W		140
RGT-S097	900	750	800	200	Single	1	—	2	39.0kW (33,500kcal/h)	37.2kW (2.67kg/h)	25A	1φ100V	0.3W		106
RGT-S127	1,200	750	800	200	Single	2	—	2	44.2kW (38,000kcal/h)	41.9kW (3.00kg/h)	25A	1φ100V	0.3W		138
RGT-S157	1,500	750	800	200	Single	2	—	3	61.0kW (52,500kcal/h)	58.1kW (4.17kg/h)	25A	1φ100V	0.3W		166

※1 Maximum pot diameter for φ95 burner is φ280mm and for φ165/190 burner is φ400mm.

Equipment with this mark is adequate and registered to Japan Food Service Equipment Association Standard.

Commercial Kitchen Appliance & Equipment Adequate Standard

■ Delivery date for the models with ☆mark is about 2 weeks after receipt of order.