

Outer Piping Standard Chinese Range *MRS Series*

Durability is further improved! *Standard Easy-to-use Chinese range.*

Press-formed frame of the frying stove for improved durability. This is suitable for hard use in busy stores. In addition, the flattered perimeter of frying stove improved cleanability. Equipped with a high-fired Chinese burner, the lineup ranges from 4-burner to 1-burner types that combine Frying, Gyoza, Soup, Noodle and Noodle Boiler.

■ Stove type and burner heating power

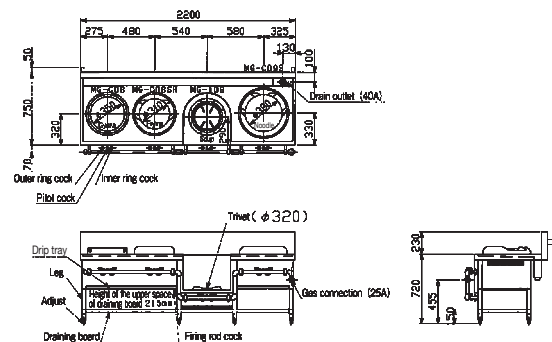
For Frying	23.3kW (20,000kcal/h)
For Noodle	23.3kW (20,000kcal/h)
For Noodle Boiler	23.3kW (20,000kcal/h)
For Gyoza	14.0kW (12,000kcal/h)
For Soup	15.1kW (13,000kcal/h)

Noodle Boiler is equipped with a "HAYAWAKI pot".

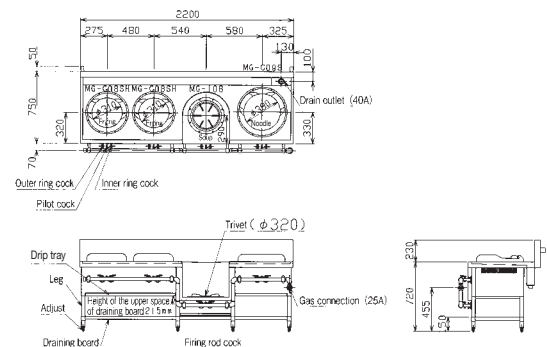


- Continuous hot water boiling mechanism with heat collector fin.
- Excellent boiling power boils noodles deliciously.

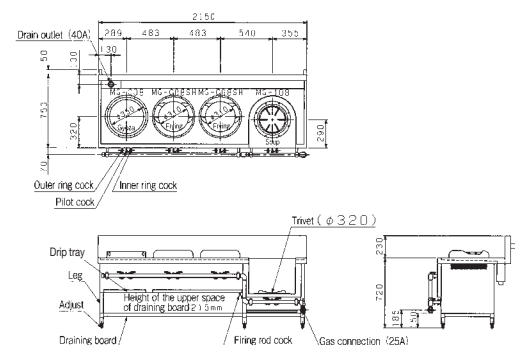
MRS-104E Gyoza + Frying + Soup + Noodle



MRS-104DE Frying x2 + Soup + Noodle

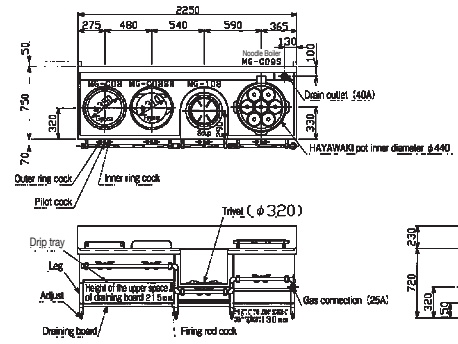


MRS-114E Gyoza + Frying x2 + Soup



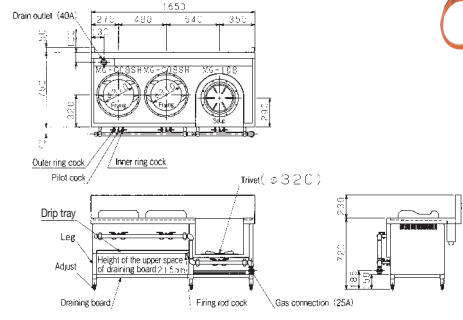
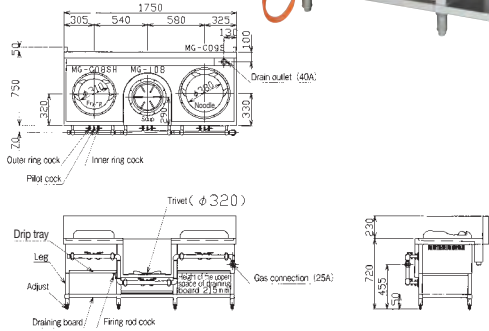
MRS-174E Gyoza + Frying + Soup + Noodle Boiler

HAYAWAKI pot and baskets are included with Noodle Boiler.



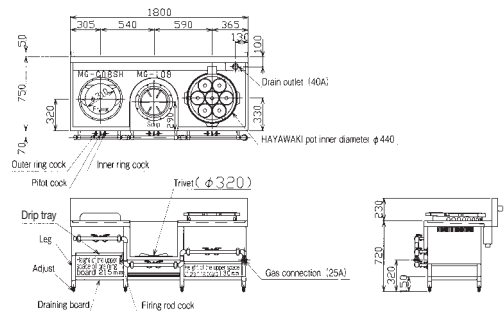
MRS-103E Frying + Soup + Noodle

MRS-113DE Frying x2 + Soup



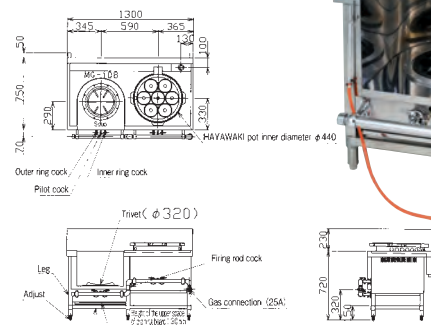
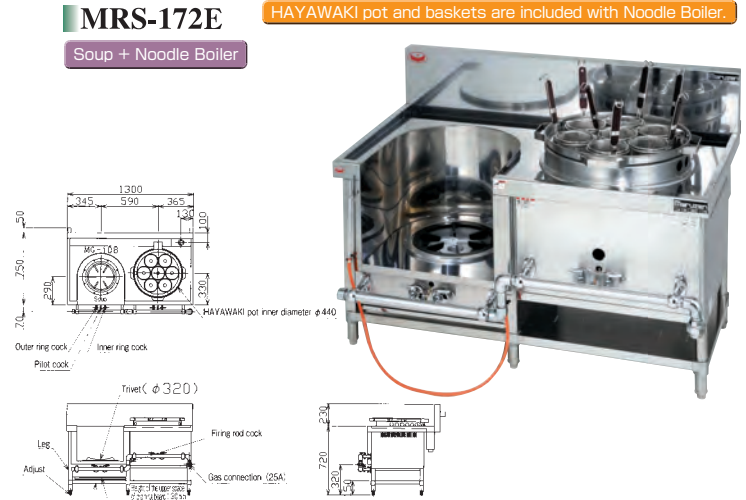
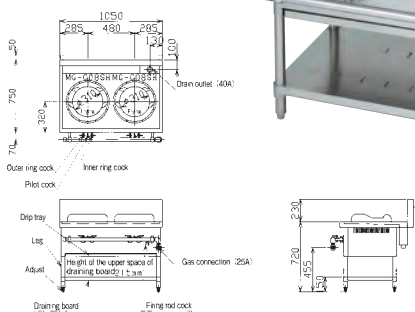
MRS-173E Frying + Soup + Noodle Boiler

HAYAWAKI pot and baskets are included with Noodle Boiler.



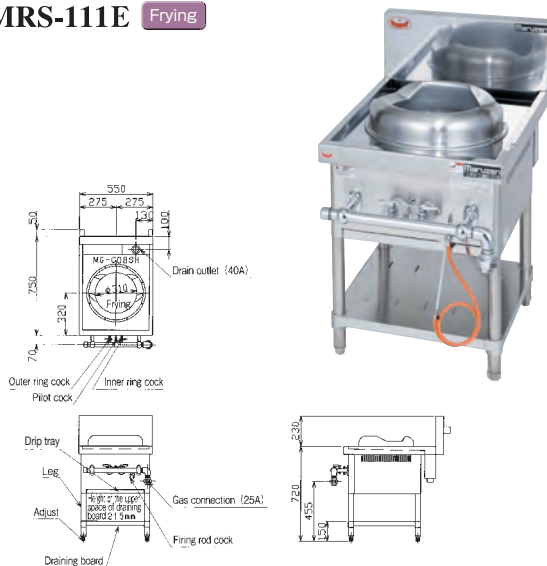
MRS-112E Frying x2

MRS-172E Soup + Noodle Boiler



Outer Piping Standard Chinese Range *MRS Series* *MRS*

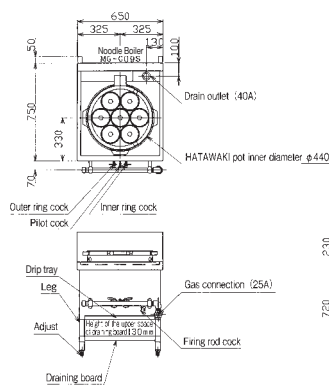
MRS-111E Frying



MRS-171E

Noodle Boiler

HAYAWAKI pot and baskets are included with Noodle Boiler.



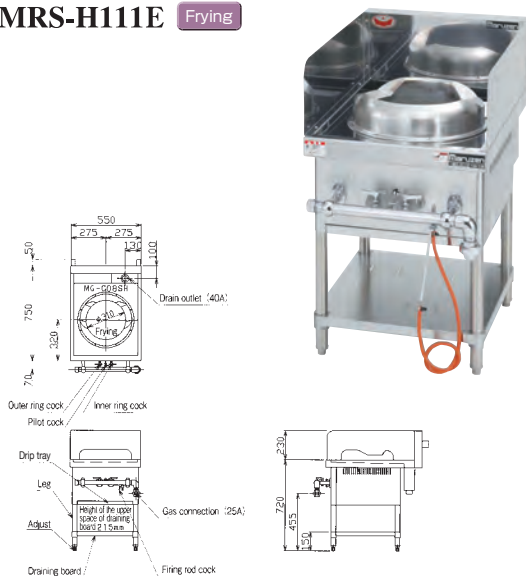
MRS Series Specifications Table

Product Name	Model	External dimensions (mm)				Stove arrangement	Gas consumption		Gas connection	Drain outlet	Weight (kg)
		Width	Depth	Height	Back		Town gas	LP gas			
4-burner range	☆MRS-104E	2,200	750	720	230	Gyoza, Frying, Soup, Noodle	75.6kW (65,000kcal/h)	75.6kW (5.42kg/h)	25A	40A	163
	☆MRS-104DE	2,200	750	720	230	Frying, Frying, Soup, Noodle	84.9kW (73,000kcal/h)	84.9kW (6.08kg/h)	25A	40A	166
	☆MRS-114E	2,150	750	720	230	Gyoza, Frying, Frying, Soup	75.6kW (65,000kcal/h)	75.6kW (5.42kg/h)	25A	40A	155
	☆MRS-174E	2,250	750	720	230	Gyoza, Frying, Soup, Noodle Boiler	75.6kW (65,000kcal/h)	75.6kW (5.42kg/h)	25A	40A	166
3-burner range	☆MRS-103E	1,750	750	720	230	Frying, Soup, Noodle	61.6kW (53,000kcal/h)	61.6kW (4.42kg/h)	25A	40A	140
	☆MRS-113DE	1,650	750	720	230	Frying, Soup	61.6kW (53,000kcal/h)	61.6kW (4.42kg/h)	25A	40A	125
	☆MRS-173E	1,800	750	720	230	Soup, Noodle Boiler	61.6kW (53,000kcal/h)	61.6kW (4.42kg/h)	25A	40A	140
2-burner range	MRS-112E	1,050	750	720	230	Frying, Frying	46.5kW (40,000kcal/h)	46.5kW (3.33kg/h)	25A	40A	76
	MRS-172E	1,300	750	720	230	Soup, Noodle Boiler	38.4kW (33,000kcal/h)	38.4kW (2.75kg/h)	25A	40A	103
1-burner range	MRS-111E	550	750	720	230	Frying	23.3kW (20,000kcal/h)	23.3kW (1.67kg/h)	25A	40A	46
	MRS-171E	650	750	720	230	Noodle Boiler	23.3kW (20,000kcal/h)	23.3kW (1.67kg/h)	25A	40A	51

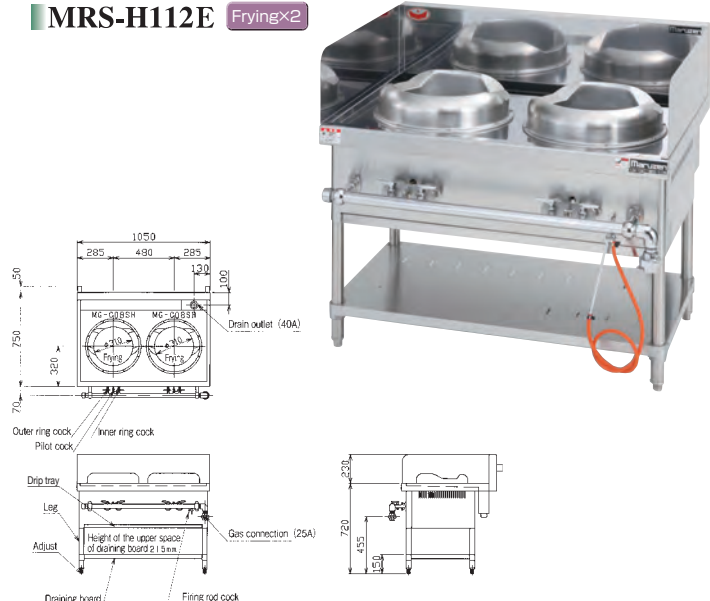
◆Noodle Boiler includes "Hayawaki Pot" and baskets. Back is monolithic for all the models, but separable type is also available. Standard rack is a fixed type but without the rack or removable rack is available (built-to-order).

Models with side guards which reduce heat radiation are also available.

MRS-H111E Frying



MRS-H112E Fryingx2



MRS-H Series Specifications Table

Product Name	Model	External dimensions (mm)				Stove arrangement	Gas consumption		Gas connection	Drain outlet	Weight (kg)
		Width	Depth	Height	Back		Town gas	LP gas			
1-stove range	MRS-H111E	550	750	720	230	Frying	23.3kW (20,000kcal/h)	23.3kW (1.67kg/h)	25A	40A	50
2-stove range	MRS-H112E	1,050	750	720	230	Frying, Frying	46.5kW (40,000kcal/h)	46.5kW (3.33kg/h)	25A	40A	80