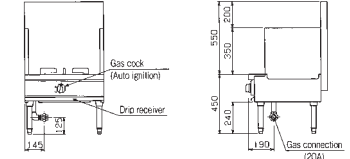
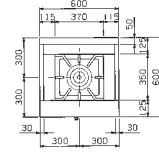


RGS-066D

φ165 burner×1



Shortened the boiling time due to the improved thermal efficiency!



※Please use stockpot of φ270~450mm.

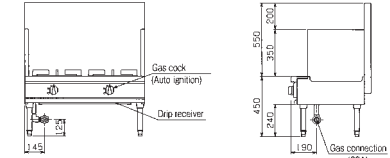
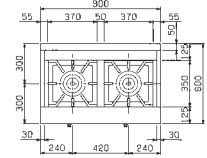
●Side guards are removable.

RGS-096D

φ165 burner×2



Shortened the boiling time due to the improved thermal efficiency!



※Please use stockpot of φ270~400mm.

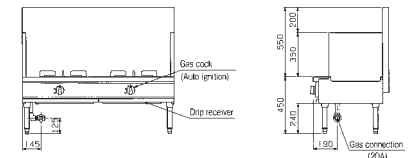
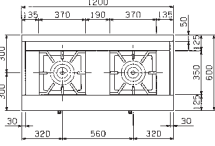
●Side guards are removable.

RGS-126D

φ165 burner×2



Shortened the boiling time due to the improved thermal efficiency!



※Please use stockpot of φ270~450mm.

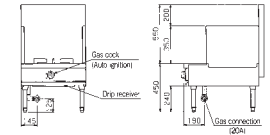
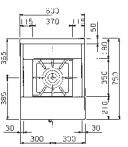
●Side guards are removable.

RGS-067D

φ165 burner×1



Shortened the boiling time due to the improved thermal efficiency!



※Please use stockpot of φ270~450mm.

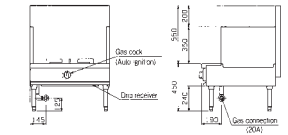
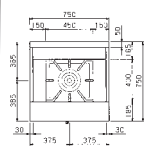
●Side guards are removable.

RGS-077D

φ190 burner×1



Shortened the boiling time due to the improved thermal efficiency!



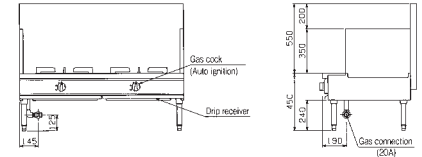
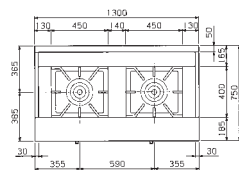
※Please use stockpot of φ300~540mm.

RGS-137D

φ190 burner×2



Shortened the boiling time due to the improved thermal efficiency!



※Please use stockpot of φ300~540mm.

●Side guards are removable.

Depth 600 mm

Depth 750 mm



■ **NEW Power Cook Soup Range [Equipped with New Universal Burner] Specifications Table <RGS>** See pages 12.

RGS-066D

Model	External dimension (mm)				No. of top burners ^{※1}		Gas consumption		Gas connection (union)	Weight (kg)
	Width	Depth	Height	Back height	φ165	φ190	Town gas	LP gas		
RGS-066D	600	600	450	550	1	—	14.5kW (12,500kcal/h)	14.0kW (1.00kg/h)	20A	57
RGS-096D	900	600	450	550	2	—	29.1kW (25,000kcal/h)	27.9kW (2.00kg/h)	20A	83
RGS-126D	1,200	600	450	550	2	—	29.1kW (25,000kcal/h)	27.9kW (2.00kg/h)	20A	93
RGS-067D	600	750	450	550	1	—	14.5kW (12,500kcal/h)	14.0kW (1.00kg/h)	20A	66
RGS-077D	750	750	450	550	—	1	18.0kW (15,500kcal/h)	17.4kW (1.25kg/h)	20A	74
RGS-137D	1,300	750	450	550	—	2	36.0kW (31,000kcal/h)	34.9kW (2.50kg/h)	20A	114

※1 Refer to P12 for the available pot diameter.