

NEW

Power Cook Charbroiler

The Model of char broiler changed!

■ **Easier to control the heating power by using gas cock with position.**

Gas cock has 3 steps position (low, medium, high), so that you can control the heating power easily according to food stuffs and menus.

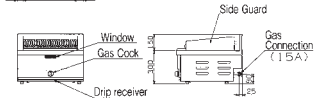
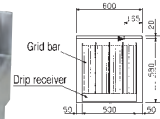


Gas Cock with position

Depth
600
mm

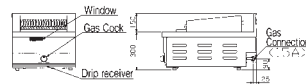
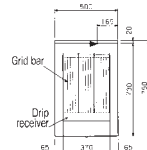
RCB-066TB

Tabletop



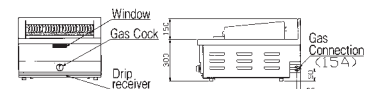
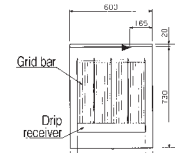
RCB-057TB

Tabletop



RCB-067TB

Tabletop

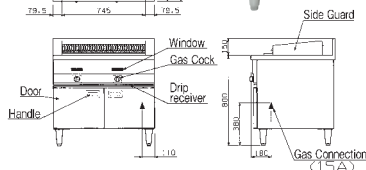
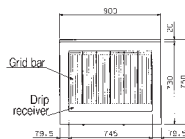


Depth
750
mm

RCB-097B

Lava stones

Refer to P2 for detail.

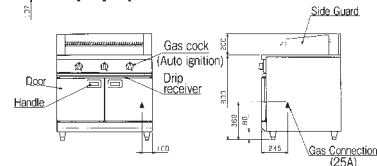
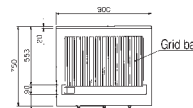


There is one model for which front design is the same as other New Power Cook series products.

RCB-097 (Production by order)

Lava stones

Refer to P2 for detail.



- If you install this next to the other New Power Cook series products, you can arrange the uniform design.
- Gas cock has 2 steps position: low, high.

NEW Power Cook Charbroiler Specifications Table <RCB> See pages 14.

RCB-066TB



RCB-097B



Model	External dimension (mm)				No. of burners	Gas consumption		Gas connection	Weight (kg)
	Width	Depth	Height	Back height		Town gas	LP gas		
RCB-066TB	600	600	300	150	2 (H Burner)	9.07kW (7,800kcal/h)	9.07kW (0.65kg/h)	15A	64
RCB-057TB	500	750	300	150	1 (Tripartite type Burner)	6.98kW (6,000kcal/h)	6.98kW (0.50kg/h)	15A	53
RCB-067TB	600	750	300	150	2 (H Burner)	9.07kW (7,800kcal/h)	9.07kW (0.65kg/h)	15A	65
RCB-097B	900	750	800	150	2 (Tripartite type Burner)	14.0kW (12,000kcal/h)	14.0kW (1.00kg/h)	15A union	95
RCB-097	900	750	800	200	6 (Bar Burner)	14.0kW (12,000kcal/h)	14.0kW (1.00kg/h)	25A union	143