

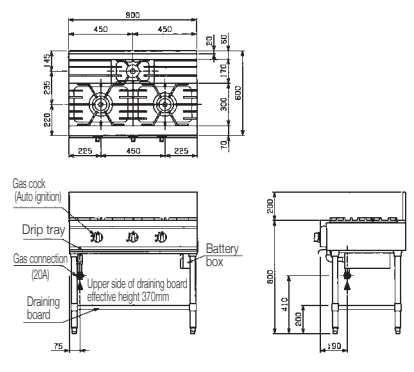
**RGT-S096B**

φ165 burner×2  
φ95 burner×1



Pilot safety device

Battery-operated for installation anywhere!



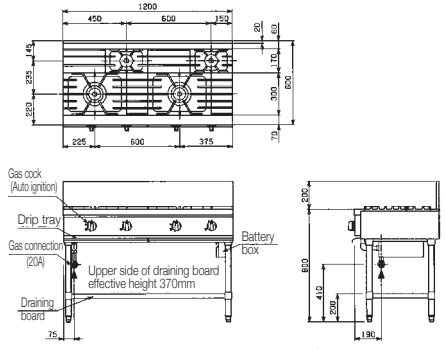
**RGT-S126B**

φ165 burner×2  
φ95 burner×2



Pilot safety device

Battery-operated for installation anywhere!



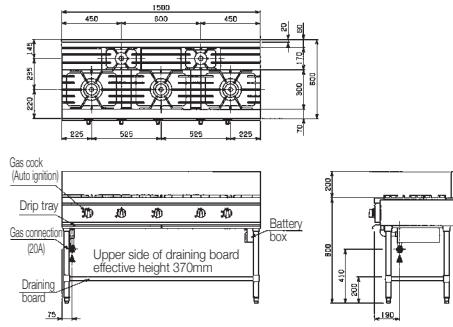
**RGT-S156B**

φ165 burner×3  
φ95 burner×2



Pilot safety device

Battery-operated for installation anywhere!



Depth  
**600**  
mm

●SUS304 is used for pipe legs and adjusts of NEW Power Cook Gas Table.

### RGT-S097B

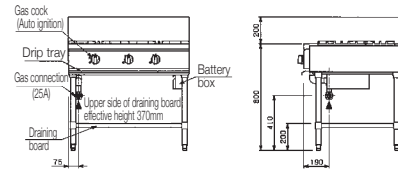
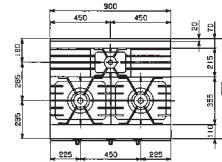
φ190 burner×2  
φ95 burner×1



Pilot safety device



Battery-operated for installation anywhere!



### RGT-S127B

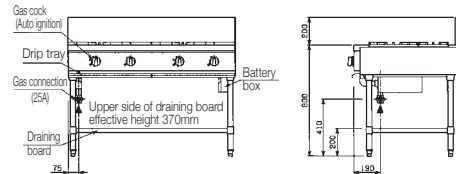
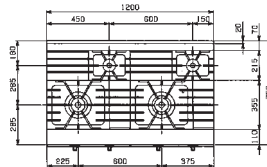
φ190 burner×2  
φ95 burner×2



Pilot safety device



Battery-operated for installation anywhere!



### RGT-S157B

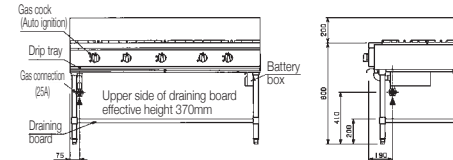
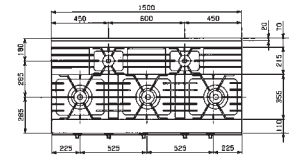
φ190 burner×3  
φ95 burner×2



Pilot safety device



Battery-operated for installation anywhere!



Depth  
**750**  
mm

NEW Power Cook Gas Table (Pilot safety shut off device equipped type) [Equipped with New Universal Burner] Specifications Table <RGT-S>

| Model     | External dimension (mm) |       |        |             | Usable side | No. of top burners <sup>※1</sup> |      |      | Gas consumption       |                   | Gas connection (union) | Weight (kg) |
|-----------|-------------------------|-------|--------|-------------|-------------|----------------------------------|------|------|-----------------------|-------------------|------------------------|-------------|
|           | Width                   | Depth | Height | Back height |             | φ95                              | φ165 | φ190 | Town gas              | LP gas            |                        |             |
| RGT-S096B | 900                     | 600   | 800    | 200         | Single      | 1                                | 2    | —    | 31.4kW (27,000kcal/h) | 29.7kW (2.13kg/h) | 20A                    | 93          |
| RGT-S126B | 1,200                   | 600   | 800    | 200         | Single      | 2                                | 2    | —    | 36.0kW (31,000kcal/h) | 33.7kW (2.42kg/h) | 20A                    | 117         |
| RGT-S156B | 1,500                   | 600   | 800    | 200         | Single      | 2                                | 3    | —    | 49.4kW (42,500kcal/h) | 46.5kW (3.33kg/h) | 20A                    | 140         |
| RGT-S097B | 900                     | 750   | 800    | 200         | Single      | 1                                | —    | 2    | 39.0kW (33,500kcal/h) | 37.2kW (2.67kg/h) | 25A                    | 106         |
| RGT-S127B | 1,200                   | 750   | 800    | 200         | Single      | 2                                | —    | 2    | 44.2kW (38,000kcal/h) | 41.9kW (3.00kg/h) | 25A                    | 138         |
| RGT-S157B | 1,500                   | 750   | 800    | 200         | Single      | 2                                | —    | 3    | 61.0kW (52,500kcal/h) | 58.1kW (4.17kg/h) | 25A                    | 166         |

※1 Maximum pot diameter for φ95 burner is φ280mm and for φ165/190 burner is φ400mm.

Equipment with this mark is adequate and registered to Japan Food Service Equipment Association Standard.

Commercial Kitchen Appliance & Equipment Adequate Standard