

## Easy-to-use and simple design and low price, the ultimate functionality of gas range and gas table!

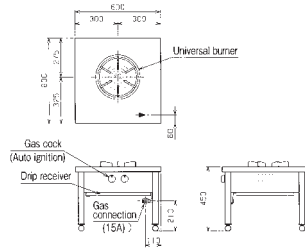
- Top burner has a clogging-preventive structure which is safe from fire dying out by boiling over.
- Heating from below and from the top effectively heats the oven up, offering an even and best finish of the cooked food.
- Our original air heat insulating design prevents the main body from overheating.
- The oven is fully made of stainless steel. It is not only improving durability but also excellent from a sanitary point of view. Especially, frosted SUS 430 No.4 is used for the top, which creates a sophisticated looking.
- There are 14 models in total, 7 models for gas range, 5 models for gas table and 2 models for soup range. You can choose the best one for your purpose of use.
- We also have option part of back guard for gas range / gas table and back guard and side guards for soup range respectively.

### Standard Type Soup Range

Depth  
**600**  
mm

**MLS-066CB**

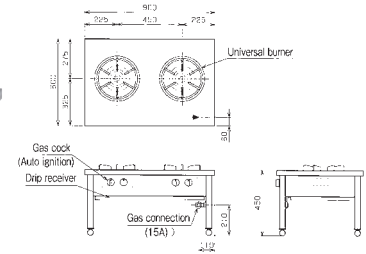
Auto-ignition



※Please use stockpot of  $\phi 270\sim 450$ mm.

**MLS-096CB**

Auto-ignition



※Please use stockpot of  $\phi 270\sim 390$ mm.

- We have back guard and side guards as option part for soup range.

#### Standard Type Soup Range Specifications Table <MLS>

Model	External dimension (mm)			Usable side	No. of burners		Gas consumption		Gas connection (union)	Weight (kg)
	Width	Depth	Height		Top		Town gas	LP gas		
					$\phi 175$	$\phi 125$				
MLS-066CB auto-ignition	600	600	450	Single	1	—	11.6kW (10,000kcal/h)	11.6kW (0.83kg/h)	15A	29
MLS-096CB auto-ignition	900	600	450	Single	2	—	23.3kW (20,000kcal/h)	23.3kW (1.67kg/h)	15A	43